



FEIYUE YAMATA

Automatic
Attaching firmly and reliably
Automatic pocket molding machine
Round button holing sewing machine
Button attaching sewing machine
Straight button holing sewing machine

Widely applied
Easy to operate
Computer controlled
High speed

Suitable for all kinds of clothing
Suitable for all materials
Adjust the tack easily
Automatic thread trimmer
Automatic presser foot lifting
Automatic lubrication system

Large memory capacity
Automatic servo motor
Lower noise, lower vibration
Self-inspected up thread cutting
Automatically stop
Controlled by the outer button

飞跃特种机系列

Special Type
Sewing Machine Series

Special Type



FEIYUE YAMATA



适用范围广!
操作简单!

Widely Applied,
easy to operate

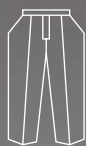
FY7900A

电子圆头锁眼机系列

ELECTRONIC EYELET BUTTON HOLING
SEWING MACHINES SERIES

This machine is applied to the eyelet button holing for suits, overcoats, uniforms, and trousers, etc. both thin or medium material. The machine has a large memory capacity that can meet clients' need of storing all kinds of designs. The two pressing feet are driven by separate cylinders, so that in case the cloth thickness of the two parts are different, it can still be firmly fixed, which ensure the quality of sewing and cutting work. The shapes of button holes are controlled by computer. The shape of holes can be rectified freely by setting the indexes on the operation panel.

- 本机适用于西服、外衣、工作服、裤子等薄、中厚料的各种样式的扣眼的锁眼。
- 扣眼形状由电脑程序操作，可随意调整
- 可将多种图案预制存储；存储容量大，保证用户需要的数据均能容纳，能充分满足用户需要；
- 压脚由各自独立的气缸驱动，即使缝料左右厚薄不一，也可被牢牢压住，从而保证缝制和切口质量；
- 稳定的底线、面线自动剪线机构，节省手工剪线时间；
- 采用伺服马达及步进马达控制，以直驱传动代替传统的皮带传动，动作快捷精准；
- 配备有下沉式机头，降低操作疲劳程度；
- 自动切口，配备有碎布回收装置，改善了作业环境，
- 机头采用双气压式弹簧支撑，方便了对机器进行日常维护。
- 以按钮操作取代了传统脚踏式操作，降低机器噪音
- 同时可根据客户要求，提供台式或沉降式机型。





FY1960

程序式电脑花样机系列

COMPUTER - CONTROLLED HIGH - SPEED
PATTERN TACKING INDUSTRIAL SEWING
MACHINE WITH IMPUT FUNCTION SERIES

- 直控伺服马达
- 低噪音，低振动
- 可自检上线断线，自动停止
- 电源断电时自动记忆使用的图案
- 缝纫过程中可随时停止
- 用外部控制旋钮，
可在200-2,500rpm范围内任意控制缝纫速度
- 缝纫结束后，可自动定位到针杆上针位
- 缝制范围 60mm × 100mm

- Automatic servo motor
- Lower noise, lower vibration
- Self-inspected up thread cutting; Automatically stop
- Automatically memorize used pattern while power off
- Stop at any time while sewing

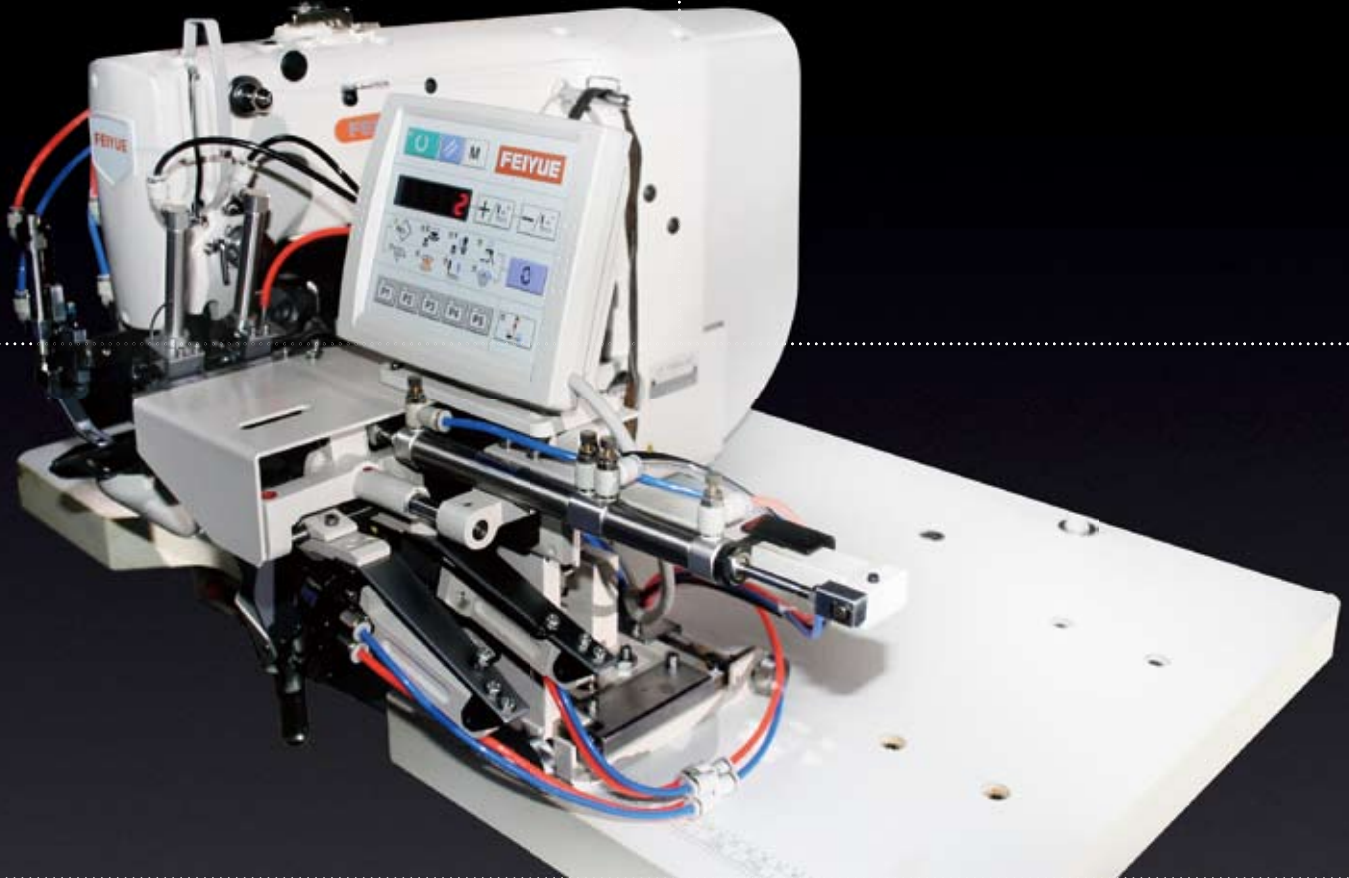
- Controlled by the outer button, freely adjust sewing speed at range of 200-2,500rpm.
- Automatic orientation to the upper stop point of needle bar after sewing.
- Sewing area 60mm × 100mm

机器信息附表 Information List

Model	Max. Sewing Width	Max. Sewing Length	Max. Sewing Thickness	Needle Size	Max. Sewing Speed	Needle Type	Max. Sewing Width	Max. Sewing Length	Max. Sewing Thickness	Max. Sewing Speed	Weight	Dimensions (mm)
FY1960	X100mm	Y60mm	0.1-12.7mm	41.2mm	2500 r.p.m.	DPx5	18mm	370w,1400,r.p.m,220v/380v	48/45kg	800×640×500		
FY7900A	0.5-2.0mm	1.5-3.2mm	10-38mm	1000-2000 r.p.m.	D0×558-14	12mm	220v/1KVA	175kg	1200×590×1120			



FEIYUE YAMATA



FY150APW

高速电子裤耳机系列

COMPUTER - CONTROLLED HIGH - SPEED
BAR - TACKING SEWING MACHINES SERIES

剪线、裤耳缝制
全过程自动化，高质高效！

*Automatically identify scrap and
remove scrap to ensure the quality
of the belt-loop*

- 配备高速电子套结机，可缝制各种类型的裤耳
- 使用分流式电磁阀和无油气缸可达到低噪防油污的效果
- 操作时，双手处于针板下方，不会伤到手，可进行安全操作
- 触动始缝开关，一次性完成裤带环折弯、送进、压紧定位、缝合、自动剪线等裤耳缝制全过程，高质高效
- 自动识别废料并自动去除废料，保证裤耳质量
- 可进行补制或单独缝制一个结，灵活机动
- 操作不当时，机器自动报警提示，快速准确排除故障

- With the head of computer-controlled high speed bar-tack sewing machine, the machine can seam all kinds of belt-loops;
- With solenoid valve and oil-free cylinder, the machine can achieve lower noise and prevent oil stain;
- Place your hands under the needle plate without getting hurt while the machine is running;
- Press the sewing-start button, the machine will automatically perform the whole process with high efficiency and high quality, including folding, feeding, pressing, seaming and automatic thread trimming, etc;
- Automatically identify scrap and remove scrap to ensure the quality of the belt-loop;
- It can individually seam a belt-loop;
- Alarm lamp will be activated automatically when improper operations are made so that problems are solved more quickly and precisely.



FY1950

高速电子套结机系列
COMPUTER - CONTROLLED HIGH - SPEED
BAR - TACKING
SEWING MACHINES SERIES

- 直控伺服马达，低噪音，低振动，车速更稳定
- 免除停车结构系统，可降低机械故障及零件损耗率
- 用外部控制按钮，可方便控制缝制速度
- 开机自动检测上针位
- With servo-motor, low noise, low vibration, which results stable speed.
- Free from stoppage sew system, narrow possibility of mechanical breakdown and parts damage rates.
- With exterior control switch, easy to control sewing speed.
- With needle bar reverse mechanical, needle can stop operation at upper halt.

机器信息附表 Information List

	缝制范围			压脚送布						
FY1950	X40mm Y20mm	2700 r.p.m.	0.1-10	间断送布	41.2mm	DP×5 DP×17	13-17mm	500W/220V±10%	42kg	800 × 640 × 500
FY150APW	X40mm Y20mm	2700 r.p.m.	0.1-10	间断送布	41.2mm	DP×5 DP×17	13-17mm	500W/220V±10%	42kg	800 × 640 × 500



FEIYUE YAMATA



FY1952

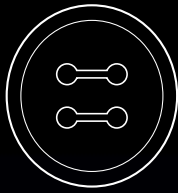
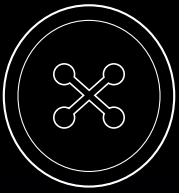
高速电子钉扣机

COMPUTER - CONTROLLED HIGH - SPEED
BUTTON ATTACHING
SEWING MACHINES SERIES

- 直控伺服马达，低噪音，低振动
- 免除停车结构系统，可降低机械故障及零件损耗率
- 通过对操作控制盘进行简单地输入来设定缝制速度
- 开机自动检测上针位
- 容易变更钮扣，可灵活对应多品种，小批量生产

启动迅速、平稳，
各种尺寸的面料都可稳定缝纫
*Auto Lubricated
& Excellent Performance.*

- With servo-motor, low noise, low vibration.
- Free from stoppage sew system, narrow possibility of mechanical breakdown and parts damage rates.
- Set sew speed simply by input data into operation dial.
- With needle bar reverse mechanical, needle can stop operation at upper halt.
- Easy to change button, flexible to variety and small lot production.



线迹种类 Patterns Mustern



FY1952-BR

自动送扣高速电子钉扣机
AUTOMATIC BUTTON FEED HIGH SPEED
COMPUTER - CONTROLLED BUTTON
ATTACHING SEWING MACHINE

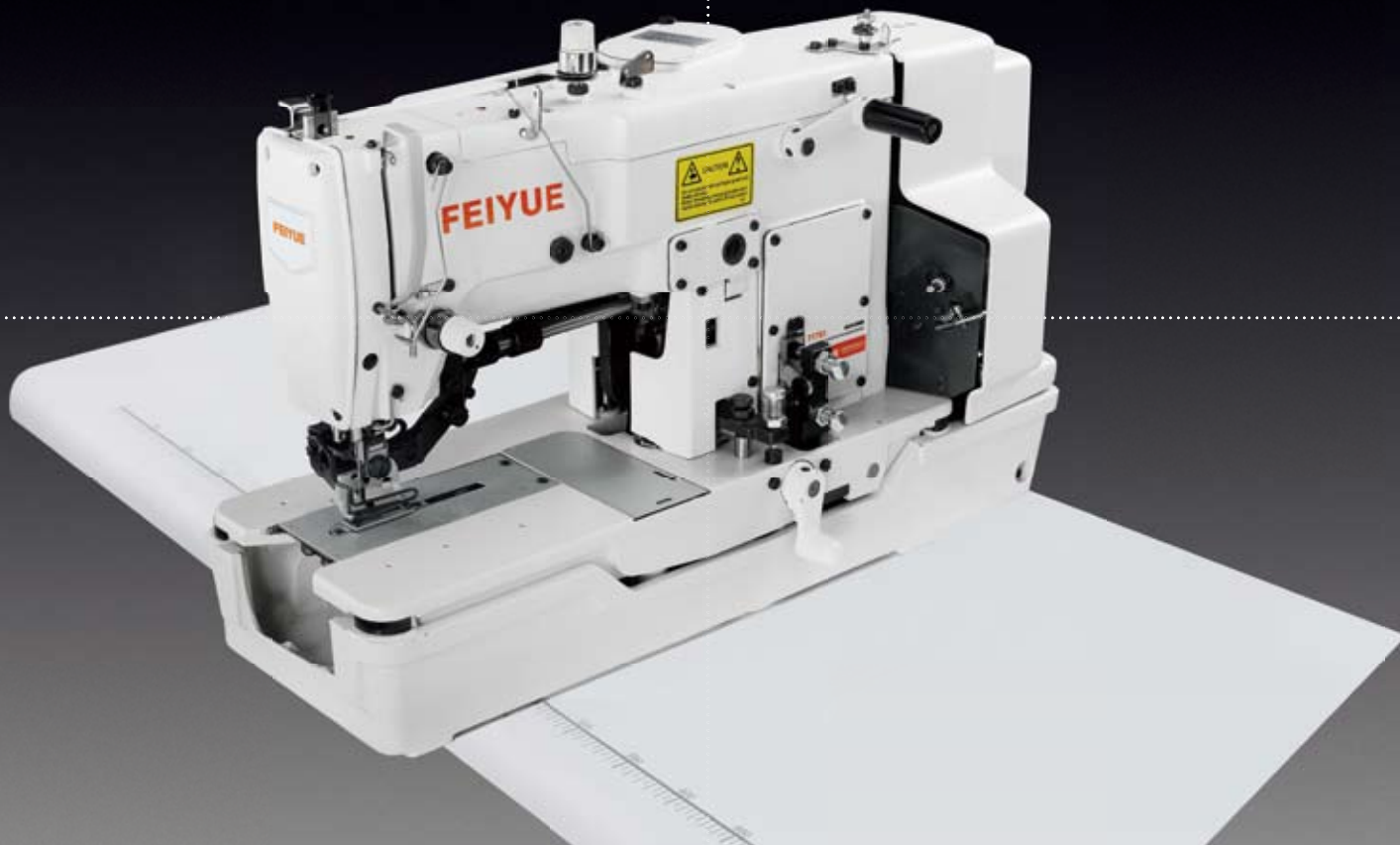
基本技术参数

Basic technical parameters:

- ★最高缝制速度：2500rpm
- ★钮扣类型：圆形平扣（双孔、四孔）
- ★钮扣尺寸：9 - 20mm 厚度：1.8 - 3.5mm
- ★缝迹长度：0.1m - 10mm
- ★压脚提升量：最大11mm
- ★机针：DP x 17 #14
- ★钮扣供给模式：连续自动供给模式，单独模式，小批量模式。

- 机头采用FY1952型高速电子钉扣机配备自动送扣装置，在进行连续钉扣工序时速度更快，效率更高。
- 自动供扣装置可切换使用钮扣连续，自动供给模式，或手动单个插入钮扣的单独模式，单件衣服上（5~6个）钮扣的小批量自动供扣模式。
- 操作人员可方便确认钮扣的剩余量，及时添加钮扣。
- 自动送扣装置可自动区别钮扣正反面，准确输送。
- With the machine head of FY1952 (high speed, computer-controlled button holing sewing machine) and equipped with automatic button feeder, which ensure rapid speed and high efficiency when doing successive button attaching work.
- Automatic button feeder can be set at three kinds of modes, that is, successive automatic supply mode, mode for individual (manually insert the button) and mode for small lots (5-6 buttons in one piece of clothes).
- The operator can see the amount of the remaining buttons clearly and add buttons timely.

- ★ Max. sewing speed: 2500 rpm.
- ★ Button type: round-shaped, flat button (2-holed, 4-holed)
- ★ Button size: 9~20mm(diameter)
- ★ BThickness: 1.8~3.5mm
- ★ Stitch length: 0.1~10mm
- ★ Lift of the presser foot: max. 11mm
- ★ Needle: DP X 17 (#14)
- ★ Button feed mode: Automatic feed mode, mode for individual and small-lot mode.



FY781

高速平头锁眼机

HIGH-SPEED STRAIGHT BUTTON HOLING SEWING MACHINE

- Buttonholing for ordinary cloth, knit, etc.
- It's suitable for all light and medium weight materials.
- This machine is capable of forming two different types of stitches, namely flat stitch and triangle stitch. The sewn seam is beautiful and firm.
- High sewing speed and adjustable buttonhole length width and stitches NO.
- Automatic lubrication system and thread trimmer are equipped.

FY782/783



- 薄料、中厚料均宜
- 用于各种针织、棉纺、化纤等织物的钮孔缝锁
- 可缝制平线迹与三角线迹，线迹牢固美观
- 缝速高，钮孔长度、宽度及针数可调
- 设有自动润滑系统及自动剪线装置

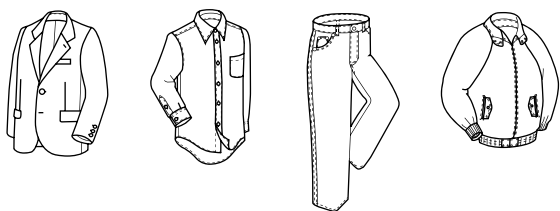
设有自动润滑系统及自动剪线装置
Automatic lubrication system and thread trimmer are equipped.

FY781	22mm	2.5-4mm	1/4#-3/4#	3600 r.p.m.	Dp×5 75,80,85,90(11 [#] -14 [#])	12mm	370w,1400,r.p.m.220v/380v	700×350×825	58kg



FY1850 系列

高速套结机系列（42针）大套结
HIGH-SPEED BAR TACKING SEWING
MACHINES SERIES



- 适用于西服、牛仔裤、工作服等各类服装受力部位加固缝制和圆头纽扣封尾加固
- 加固结易于调节，自动剪线，自动抬压脚，油槽式集中供油
- Bar tacking for various kinds of clothing such as suits, jeans and work clothes, also applicable to tacking(for end) eye-let buttonhole tacking.
- Adjust the tack length and tack width easily, automatic thread trimmer, automatic presser foot lifting, concentrated lubricating.

FY1850-1（21针）小套结

FY1850-2（28针）小套结

FY1850	8-16mm	1.5-3mm	42	1800 r.p.m.	DPx5	17mm	370w,1400,r.p.m.220v/380v	780×360×550	48/45kg
FY1850-1	4-8mm	1.5-3mm	21	1800r.p.m.	DPx5	17mm	370w,1400,r.p.m.220v/380v	780×360×550	48/45kg
FY1850-2	4-8.0mm	1.5-3mm	28	1800 r.p.m.	DPx5	17mm	370w,1400,r.p.m.220v/380v	780×360×550	48/45kg



FEIYUE YAMATA



FY9505

全自动口袋压制成型机

AUTOMATIC POCKET MOLDING MACHINE

适用范围广！
操作简单！

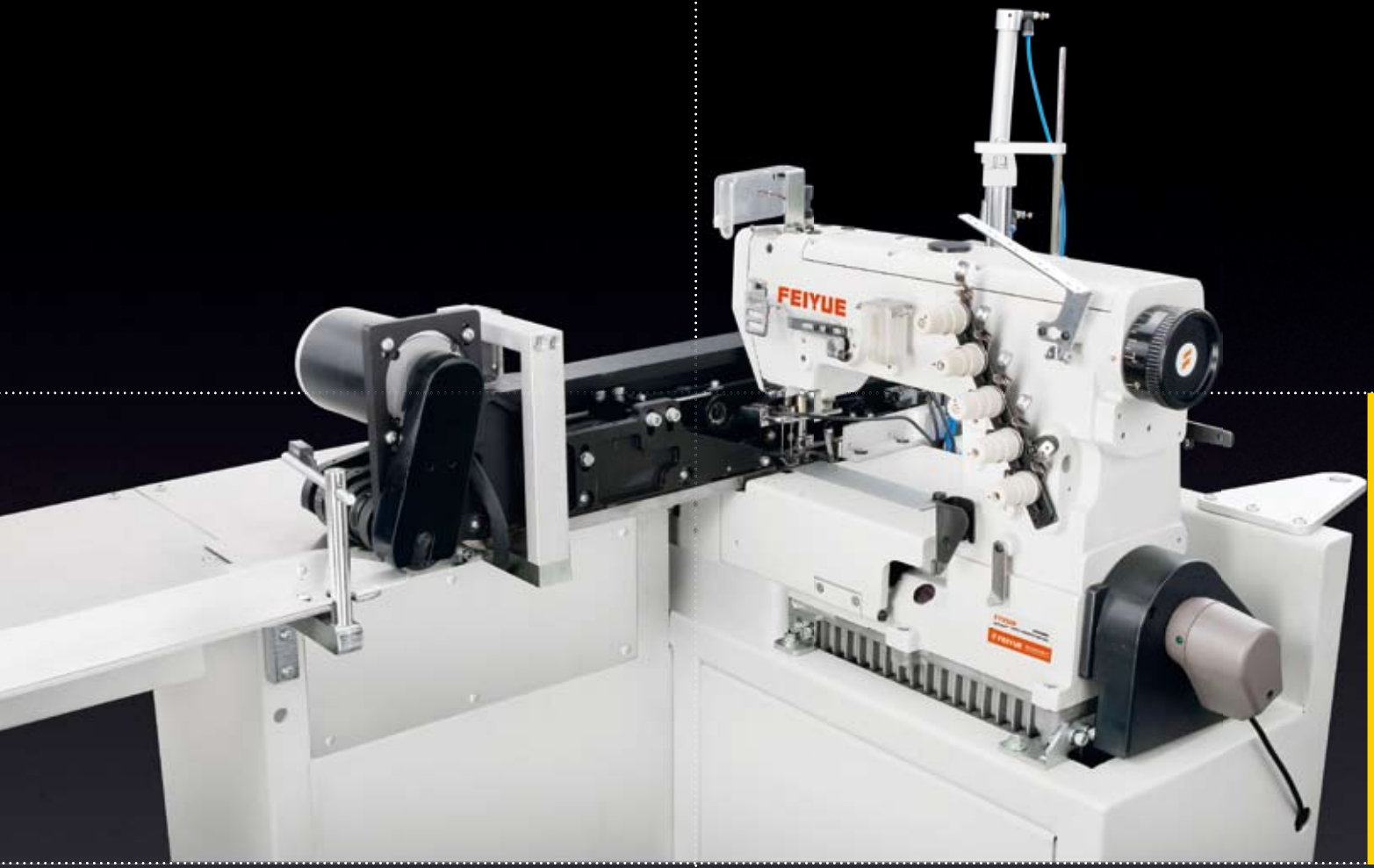
Widely Applied,
easy to operate.

- 自动口袋凹型多边折边整烫定型机，根据服装口袋形状，依照模板设置自动实施工作，折叠压制（加压）升温达到熨烫平整精确操作。
- This auto machine is used to fold and iron multi-side concave pockets. By setting the moulding board, the operation is carried out automatically according to the shape of the pockets.

- 可根据布料要求设定整烫温度与整烫时间长短，操作后自动弹出，内加热熨烫，确保面料不受损伤，使接受加工的面料，清洁不易发亮。
- The time and temperature of ironing can be set according to the cloth. The Inner Heating system makes sure that the cloth won't be hurt. At the end of the operation, the cloth will spring out automatically.

The time and temperature of ironing can be set according to the cloth.

可根据布料要求设定整烫温度与整烫时间长短！



FY9509

自动折后袋盖机
AUTOMATIC POCKET HEMMING MACHINE

- 自动折合口袋边机械，以口袋的缝制为主。
- 当布料裁剪好后，折叠布边时，由光电传感器引导机械自动启动缝纫。
- 折边，缝纫，剪线一次完成，工作效率高。
- This machine is applied to the sewing and folding of pockets.
- After the cloth has been cut out and folded, the machine automatically starts to work, induced by the photoelectric transducer.
- Folding, sewing, and cutting are done at the same time, which ensure high work efficiency of this machine.

自动折合口袋边机械，
以口袋的缝制为主。

*This machine is applied
to the sewing
and folding of pockets.*

折边，缝纫，
剪线一次完成

*Folding, sewing,
and cutting are done
at the same time*



FEIYUE YAMATA

FY8620

自动供条开袋机
AUTOMATIC LOCKSTITCH SLANT POCKET
WELT SEWING MACHINE SERIES



*Upgraded
quality seams.*

- The machine automatically adjust the sewing length and conner knife intervals with accuracy according to the flap length.
- With its maximum sewing speed of 3000rpm and quick return of its feed dog, the machine offers shortened machine cycle time, and increases effectiveness.
- Through an increased material holding force and the utilization of a hand tailoring roller, the machine places welting patches made of slippery material at correct sewing positions there by upgraded quality seams.
- Easy to sew long materials by adopting up-feed mode.

- 根据袋盖的长度，自动调整缝距及角刀的间隙
- 本机具备3000rpm的最高缝速、压脚快速返回等功能，缩短了缝制时间，提高了生产效率
- 采用特制滚边器，可以很好地压住太光滑的布料，防止其错位，从而产生高品质的缝纫产品
- 采用上送料方式，易缝纫大褂等长物件

采用特制滚边器！
防止其错位！缝品更优美！



FY8620



14#-18#



3000 r.p.m.



2.4mm (1.8-3.4)



可选范围20-250mm



12mm



220v/500w



0.5MPa 60L/min



820×1300×1155



222.5kg

FY9501-3

18#

可选范围20-250mm

30mm

220v/500w

低噪音!
低震动! 更稳定!



FY9501-3

自动多功能花样机
AUTOMATIC LOCKSTITCH SLANT POCKET
WELT SEWING MACHINE

★缝制范围: 250mmX160mm

★缝速: 200—230rpm

★机针: dpX17 #18

★外压脚担升高度: 30mm

★电机: 550W

★电压: 220V

★压缩空气: 4Kgf/cm²以上

★图案放大、缩小功能; 横、竖轴分别
为10~20% (0.1%为一单位)

★Sewing area: 250mmX160mm

★Sewing speed: 200-230rpm

★Needle: dpX17 #18

★Foot presser lift height: 30mm

★Motor: 550W

★Voltage: 220V

★Compressed air: above 4kgf/cm²

★Pattern zoom; X axis and Y axis
are nearly 10-20% (0.1% per unit)

- 缝制范围达到250mmX160mm, 使用范围广
- 实现全程微电脑控制, 依据编制好的花样程序, 能快速起缝和终止缝纫, 自动剪线, 自动抬压脚, 大幅度缩短循环缝时间, 实现高效率生产
- 宽阔的操作空间, 可缝制大型面料; 外压脚提升高度为: 30mm, 确保顺畅地缝制较厚面料
- 广泛应用于徽章、标志绣缝、牛仔裤后袋缝合、箱包小件缝合等

- Wide application, the sewing area could be 250mmX160mm.
- Wide operation space, suitable for the sewing of large material.
Lift height of foot presser could be 30mm, ensure the smooth sewing of heavy duty.
- The whole procedure achieved the computer control. According to the programme set, the machine could start and stop promptly with the function of auto-trimmer, auto foot presser lifter, which decrease the sewing period and advance the production efficiency.
- Wildly applied in the sewing of badge and mark, cover sewing of jeans' back pocket and suit case.



FY373

钉扣机系列
BUTTON ATTACHING
SEWING MACHINES SERIES

单踏板启动,
自动抬压脚,
自动剪线,
缝钉牢固可靠!
维修简便!

- 主要用于二孔或四孔的一字和十字平钮扣缝钉，若加附具，可缝钉带柄及其它纽扣
- This machine is applicable to button-attaching for ordinary button with two or four holes. Shank button and others are also can be sewn by equipping accessories. It's suitable for light and medium weight materials.

*Single pedal starting.
Automatic presser lifting,
Automatic thread trimmer,
Attaching firmly and reliably,
Convenient maintenance.*



线迹种类 Patterns Mustern

机器信息附表 Information List

FY373	10-28mm	14mm	2.5×6.5 0-6.5	1500 s.p.m.	TQ×720#	8.16.32任选	★	250W, 1400 r.p.m.220v/380v	510×350×400	22kg



单踏板启动
自动抬压脚
自动剪线
缝钉牢固可靠
维修简便

FY558

高速圆头锁眼机系列

HIGH-SPEED EYELET BUTTON HOLING
SEWING MACHINE SERIES



- 本机具有先切后缝和先缝后切两大功能，能缝锁圆头带收尾、圆头无收尾、直端带收尾、直端无收尾四种钮孔型式；具有面线自动剪线及自动抬压脚功能。
- The machine offers two main functions of cutting the buttonhole first then buttonholing, and buttonholing first then cutting. It can finish the eyelet buttonholing and straight buttonholing that with or without ending for the buttonhole. The machine also has the functions of auto-trimming, and auto-lifting of the presser foot.

- ★ 最高缝纫速度：1600S/min
- ★ 钮孔长度：6 --- 42mm
- ★ 钮孔宽度：5.5 --- 7mm
- ★ 压脚提升高度：10mm
- ★ 采用机针：558×1
- ★ 电动机功率：370W

Max. Speed: 1600S/Min
Length of the buttonhole: 6 --- 42 mm
Width of the buttonhole: 5.5 --- 7 mm
Presser foot height: 10mm
Needle: 558×1
Motor power: 370W

调整自如，作业舒适！
*Easy adjustment
Comfortable operation*

FY100S

工业缝纫机数控伺服系统 INDUSTRIAL SEWING MACHINES NUMERICAL CONTROL SERVO SYSTEM

基本技术参数

Basic technical parameters:

- | | |
|--------------|------------------------------------|
| ★ 无级变速 | No grade change speed |
| ★ 针位控制, 上下停针 | Control needle position |
| ★ 慢启动 | Low launch |
| ★ 压脚提升 | Presser foot lift |
| ★ 自动剪线路拔线 | Auto thread trimmer, thread porker |
| ★ 自动正缝、倒缝 | Auto sewing, reverse feed sewing |
| ★ 平缝轨迹控制 | Lockstitch track control |
| ★ 四位高亮度LED显示 | Showing 4 highlight LED |

系统特性

System function

- ★型号: FY-100S
- ★电机型式: AC伺服电机 PMSM
- ★电压范围: 200-240V
- ★电机额定功率: 250W / 400W
- ★电机最大转速: 6000 r. p. m.

Model type: FY-s100S

Motortype: AC servo system
motor PMSM

Voltage range: 200-240V

Motor power: 250W / 400W

Rotation speed(max): 6000r.p.m.

经销商/Agent



ONE FAMILY
WORLDWIDE

四海一家 中國飛躍

中国飞跃集团
CHINA FEIYUE GROUP

地址: 中国浙江省台州市椒江机场中路109号
Add: NO.109 Middle Airport Rd. taizhou City. Zhejiang Province. P.R.China
电话 Tel: 0576-88155811/88176395
传真 Fax: 0576-88155800/88155809 电子邮箱 Email:sales@feiyue.cn
网址 <http://www.feiyuegroup.com> 邮政编码 Post Code: 318010

- 本手册所列之产品可能会因改良而有所变动,以随机说明书为准,恕不另行通知。
- 由于印刷原因,产品实际颜色可能稍有差异,敬请谅解。
- 中国飞跃集团公司保留对此资料的解释权。