



FEIYUE YAMATA

High-speed
Easily adjusted
Simplified dial
High automatic level

Be avoided
Automatically
High efficiency
Double-needle

Automatically
Less noise
Complete-closed auto-lubrication
More comfortable
Low noise
Special sewing
Special treatment

FEIYUE

Basic stitch
Covering stitch
Wear-resistance
Easy adjustment
Easy learning
Comfortable operation

Easy adjustment
Comfortable operation
Low-vibration
Low-noise
Auto-lubrication system
Complete-closed
Comfortable operation
High automatic level

飞跃高速绷缝机系列

High-Speed Stretch
Sewing Machine Series

Stretch



FEIYUE YAMATA



FY2008 系列

超高速绷缝机系列

SUPER HIGH - SPEED MULTI NEEDLE
SEWING MACHINES SERIES

穿底线简单易行

- 增穿底线时只需轻轻扳动旋钮，底线底座便会从机器内部弹出，即可简单地进行穿线，进一步提高操作工的工作效率。
- The under thread base would emerge when turn the knob smoothly, which simplify the threading and improve the efficiency .

FY2008-01CB364

基本型 BASIC MODEL

FY2008-01CB356

基本型 BASIC MODEL

FY2008-02BB354

缝滚条 SEWING ROLLED - EDGE

FY2008-02BB356

缝滚条 SEWING ROLLED - EDGE

送布机构的微调

- 使用按钮可对针码进行无级调节、主要输送齿、差动输送齿运动皆完全独立，因此皆能各别微调其输送量
- Differential feed amount can be easily adjusted by using a dial.with a simplified dial designed on the front surface of the machine, the differential feed ratio can be adjusted with ease.



FY2008-02BB

超高速绷缝机系列

SUPER HIGH - SPEED MULTI NEEDLE
SEWING MACHINES SERIES

采用伺服电机

- 增加上、下线切线装置和抬压脚功能以及准确定位系统，使操作更为方便
- Adopt servo motor, add to take-up and lower thread cutting devices, function of presser foot take up and accurate orientation system, easy to operate.

防止断线机构

- 能使缝线及针的冷却机构，防止在高速缝纫时由于高温而造成断线的现象，即使在使用化纤线时也能得到安全的缝纫
- The thread anti-breakage structure has the function of cooling the thread and needle. that is why even the machine is running at a very high-speed and a chemical-fibre thread is used, the machine can also work fluently without thread breakage.

调整自如, 作业舒适!

*Easy adjustment
Comfortable operation*



FEIYUE YAMATA



FY2500 系列

高速绷缝机系列

HIGH - SPEED STRETCH SEWING MACHINES SERIES

FY2500- 05/MD

花边松紧带 SEWING ELASTIC LACE CORD

FY2500- 06AS

双钩针环缝 DOUBLE CHAIN - STITCH IN TWO - LOOPER

FY2500- 07/F

裤耳车缝 TROUSERS TAPE SEAM

FY2500- 08AB

下摆折边缝 BOTTOM FOLDING SEAM

FY2500- 01CB/UT

自动剪线 AUTOMATIC THREAD TRIMMER

机器信息附表 Information List

FY2500-01CB	2/3	4/5	3.2/4.0/4.8/5.6○/6.4	1.4-3.6mm	1:2 1:0.7	7mm	11#	6000r.p.m.
FY2500-02BB	2/3	4/5	3.2/4.0/4.8/5.6○/6.4	1.4-3.6mm	1:2 1:0.7	7mm	11#	6000r.p.m.
FY2500-03EB	2/3	4/5	3.2/4.0/4.8/5.6○/6.4	1.4-3.6mm	1:2 1:0.7	7mm	11#	6000r.p.m.
FY2500-04DB	2/4	4/6	3.2/5.6○/6.4	1.4-3.6mm	1:2 1:0.7	7mm	11#	5000r.p.m.

FY2500- 01CB

基本型 BASIC MODEL

FY2500- 02BB

缝滚条 SEWING ROLLED - EDGE

FY2500- 03EB

盖缝 COVER SEAM

FY2500- 04DB

四针六线基本型
BASIC MODEL FOR 4 NEEDLES 6 THREADS

采用伺服电机

- 增加上、下线切线装置和抬压脚功能以及准确定位系统，使操作更为方便
- Adopt servo motor, add to take-up and lower thread cutting devices, function of presser foot take up and accurate orientation system, easy to operate.

可得到漂亮的针迹独立移动针托

- 采用有防止跳针效果的独立移动针托，利图防止 跳针、而且由于采用微调式弯针架调节机构，在交换机针时对针隙的调节简单易行
- Elegant stitches can be achieved thanks to the adoption of movable needle-holder and adjustable looper-frame. in this way, stitch jump can be avoided and the adjustment of the needle clearance became easier.

防止断线机构

- 能使缝线及针的冷却机构，防止在高速缝纫时由于高温而造成断线的现象，即使在使用化纤线时也能得到安全的缝纫
- The thread anti-breakage structure has the function of cooling the thread and needle. that is why even the machine is running at a very high-speed and a chemical-fibre thread is used, the machine can also work fluently without thread breakage.

送布机构的微调

- 使用按钮可对针码进行无级调节、主要输送齿、差动输送齿运动皆完全独立，因此皆能各别微调其输送量
- Differential feed amount can be easily adjusted by using a dial. with a simplified dial designed on the front surface of the machine, the differential feed ratio can be adjusted with ease.

机器信息附表 Information List

								
FY2500-05MD	2/3	4/5	3.2/4.0/4.8/5.6⊙/6.4	1.4-3.6mm	1:2 1:0.7	7mm	11#	5000r.p.m.
FY2500-06AS	2	4	5.6⊙/6.4	1.4-3.6mm	1:2 1:0.7	8mm	11#	6000r.p.m.
FY2500-07F	2	3	5.6⊙/6.4	1.4-3.6mm	1:2 1:0.7	8mm	11#	4500r.p.m.
FY2500-08AB	2/3	4/5	3.2/4.0/4.8/5.6⊙/6.4	1.4-3.6mm	1:2 1:0.7	7mm	11#	6000r.p.m.



FEIYUE YAMATA

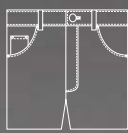


FY2500-02BB

高速绷缝机系列

HIGH - SPEED STRETCH SEWING MACHINE
SERIES

- 能使缝线及针的冷却机构，防止在高速缝纫时由于高温而造成断线的现象，即使在使用化纤线时也能得到安全的缝纫
- The thread anti-breakage structure has the function of cooling the thread and needle. that is why even the machine is running at a very high-speed and a chemical-fibre thread is used, the machine can also work fluently without thread breakage.



送布机构的微调

Inching adjustment of feeder mechanism

新增防漏装置

New anti-leaking device.

可得到漂亮的针迹独立移动针托

Independent moving needle support for elegant stitch



FY2500-04DB

高速绷缝机系列

HIGH - SPEED STRETCH SEWING MACHINE
SERIES

- 采用有防止跳针效果的独立移动针托，利图防止跳针、而且由于采用微调式弯针架调节机构，在交换机针时对针隙的调节简单易行
- Elegant stitches can be achieved thanks to the adoption of movable needle-holder and adjustable looper-frame. in this way, stitch jump can be avoided and the adjustment of the needle clearance became easier.

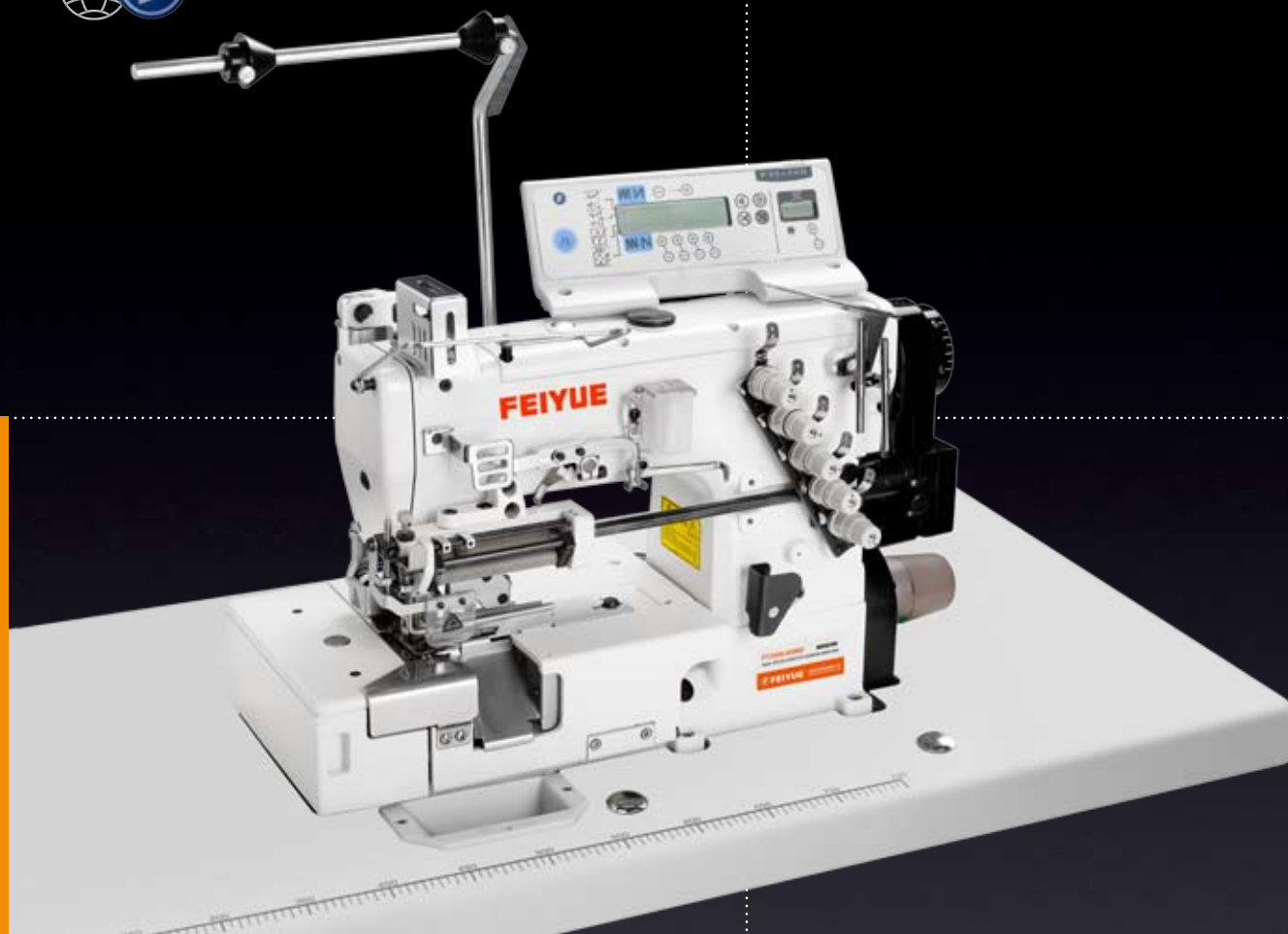
- 使用按钮可对针码进行无级调节、主要输送齿、差动输送齿运动皆完全独立，因此皆能各别微调其输送量
- Differential feed amount can be easily adjusted by using a dial. with a simplified dial designed on the front surface of the machine, the differential feed ratio can be adjusted with ease.

调整自如, 作业舒适!

*Easy adjustment
Comfortable operation*



FEIYUE YAMATA



FY2500-05/MD

高速绷缝机系列

HIGH - SPEED STRETCH SEWING MACHINE SERIES

- 采用伺服电机，增加上、下线切线装置和抬压脚功能以及准确定位系统，使操作更为方便
- Adopt servo motor, add to take-up and lower thread cutting devices, function of presser foot take up and accurate orientation system, easy to operate.

- 采用有防止跳针效果的独立移动针托，利图防止跳针、而且由于采用微调式弯针架调节机构，在交换机针时对针隙的调节简单易行
- Elegant stitches can be achieved thanks to the adoption of movable needle-holder and adjustable looper-frame. in this way, stitch jump can be avoided and the adjustment of the needle clearance became easier.

- 增穿底线时只需轻轻扳动旋钮，底线底座便会从机器内部弹出，即可简单地进行穿线，进一步提高操作工的工作效率。
- The under thread base would emerge when turn the knob smoothly, which simplify the threading and improve the efficiency .



- 本机安装标准10mm卷边器，针间距6.4mm，如需其他特殊规格，请在定货时指定
- The standard machine have 10mm hemming device with needle gauge of 6.4mm. Please indicate in the order if you have specific requirement.

- 前切刀装置能将布料两边切掉，使布料达到所需宽度，然后通过卷边器卷成所需裤耳，包边器宽度有9mm，10mm，12mm，15mm，20mm 五种规格
- The front cutting device could cut the two side of the material to the length needed, then the hemming device hem it to the loop demand. The width of hemming could be 9mm,10mm,12mm,20mm.

FY2500-07F/TK

高速裤耳缝纫机

HIGH-SPEED LOOP SEWING MACHINE

- 本机适用于缝制各种休闲裤、西裤裤耳。装有数控自由定长度切带子装置。（注：如用于缝制厚料，牛仔布裤耳，缝速为3000转移/分以下。）
- The machine is applied for the sewing of pants and trousers' loop.The device to control the length of belt cutting installed.Please adjust the sewing speed to 3000r.p.m while sewing the heavy material and loop of jeans.



FEIYUE YAMATA

FY2700-01C

高速绷缝机

HIGH-SPEED STRETCH SEWING MACHINE



FY2700 系列

高速绷缝机系列

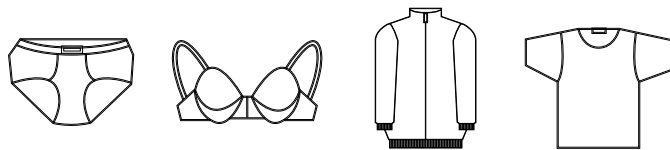
HIGH-SPEED STRETCH SEWING MACHINES SERIES

- 其基本型可形成多线链式线迹，在基本型的基础上进行派生后，还可用作缝制尼龙拉链、缝绣荷叶花边等专用缝纫机

- The basic model of this series machine can form basic stitch and covering stitch. On the above-mentioned basic stitches, through derivation, it can also be used as special sewing machine to sew nylon zippers and scallops.

- 采用全封闭冷式自动润滑系统，主传动采用同步带传动以确保高转速低噪声性能，对有关零件材质均作轻质化或特殊硬化处理，以提高机器低振、耐磨性能

- This machine adopts complete-closed auto lubrication system, main drive adopts timing belt to assure high speed and less noise, the concerned parts are through special treatment, to improve its wear-resistance capacity.



- 适用于缝制针织内衣、运动衣裤、T恤衫、胸罩、束腰裙松紧带等各种弹性织物的领口、袖口等
- Suitable for sewing the collar edge and sleeve-cuff of the knitted underwears, sports shirts and trousers, T-shirts, elastic tape of skirts etc.



FY2700-02BB

高速绷缝机

HIGH-SPEED STRETCH SEWING MACHINE



FY2700-01CB/UT

高速绷缝机

HIGH-SPEED STRETCH SEWING MACHINE



FY2700-03EB

盖缝
COVER SEAM



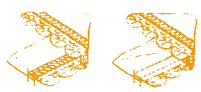
FY2700-08AB

下摆折边缝
BOTTOM FOLDING SEAM



FY2700-01CB

基本型
BASIC MODEL



FY2700-05/MD

花边松紧带
SEWING ELASTIC LACE CORD



FY2700-02BB

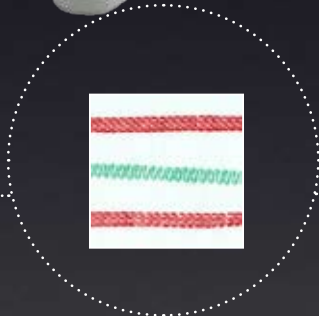
缝滚条
SEWING ROLLED-EDGE

机器信息附表 Information List

FY2007-03EB	2/3	4/5	3.2/4.0/4.8/5.6⊙/6.4	1.4-3.6mm	1:2.9 1:0.3	7mm	11#	6000r.p.m.
FY2007-08AB	2/3	4/5	3.2/4.0/4.8/5.6⊙/6.4	1.4-3.6mm	1:2.9 1:0.3	7mm	11#	6000r.p.m.
FY2007-01CB	2/4	4/5	3.2/4.0/4.8/5.6⊙/6.4	1.4-3.6mm	1:2.9 1:0.3	7mm	11#	6000r.p.m.
FY2007-05/MD	2/3	4/5	3.2/4.0/4.8/5.6⊙/6.4	1.4-3.6mm	1:2.9 1:0.3	7mm	11#	5000r.p.m.
FY2007-02BB	2/3	4/5	3.2/4.0/4.8/5.6⊙/6.4	1.4-3.6mm	1:2.9 1:0.3	7mm	11#	6000r.p.m.



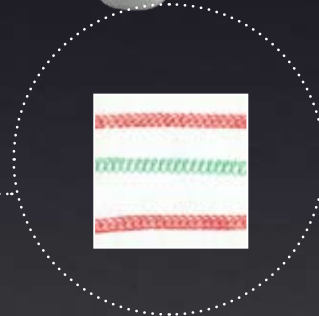
FEIYUE YAMATA



FY2600 系列

筒式高速绷缝机系列

CYLINDER BED HIGH - SPEED MULTI NEEDLE SEWING MACHINES SERIES



FY2600CD

差动筒式高速绷缝机系列

CYLINDER BED HIGH - SPEED SEWING MACHINE SERIES

调整自如, 作业舒适!

Easy adjustment
Comfortable operation

机器信息附表 Information List



FY2600



2/3



4/5



3.2/4.0/4.8/5.6○/6.4



1.5-5mm



2.5-5.0mm



7mm



11#

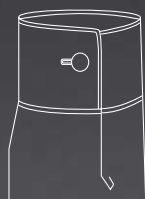
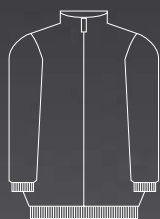
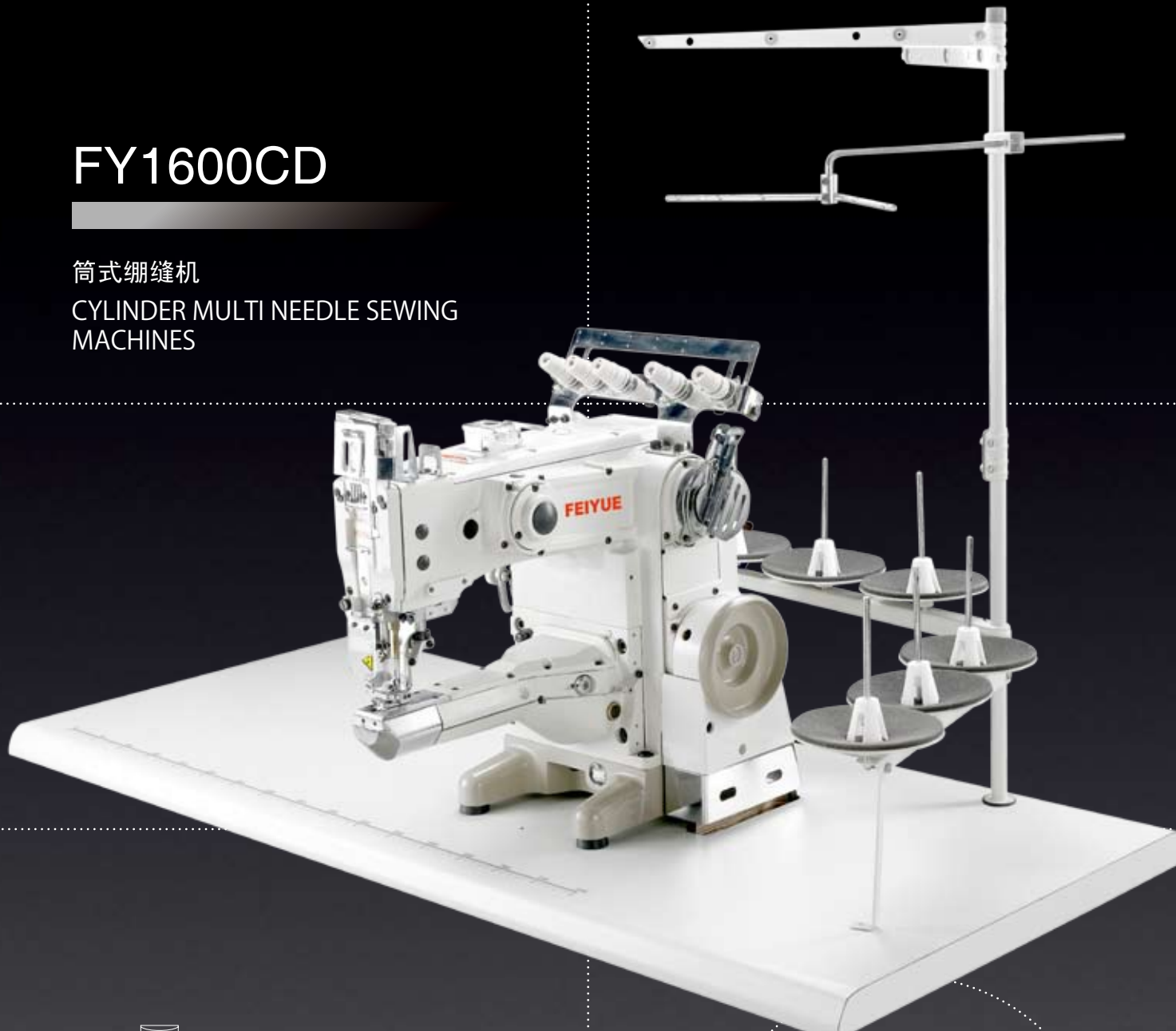


3500r.p.m.

FY1600CD

筒式绷缝机

CYLINDER MULTI NEEDLE SEWING
MACHINES



低振动! 低噪音!
*Low-vibration
and low-noise*

适本产品采用了细筒型机台, 对于运动服的袖口、袖口松紧带等小制品和各种圆型制品的包饰缝制作业都能轻松完成

With cylinder bed, this product can easily make some small and round interlock sewing work such as wristband and cuff elastic lace etc.



FY32008 系列

高速绷缝机
HIGH-SPEED STRETCH SEWING
MACHINE SERIES

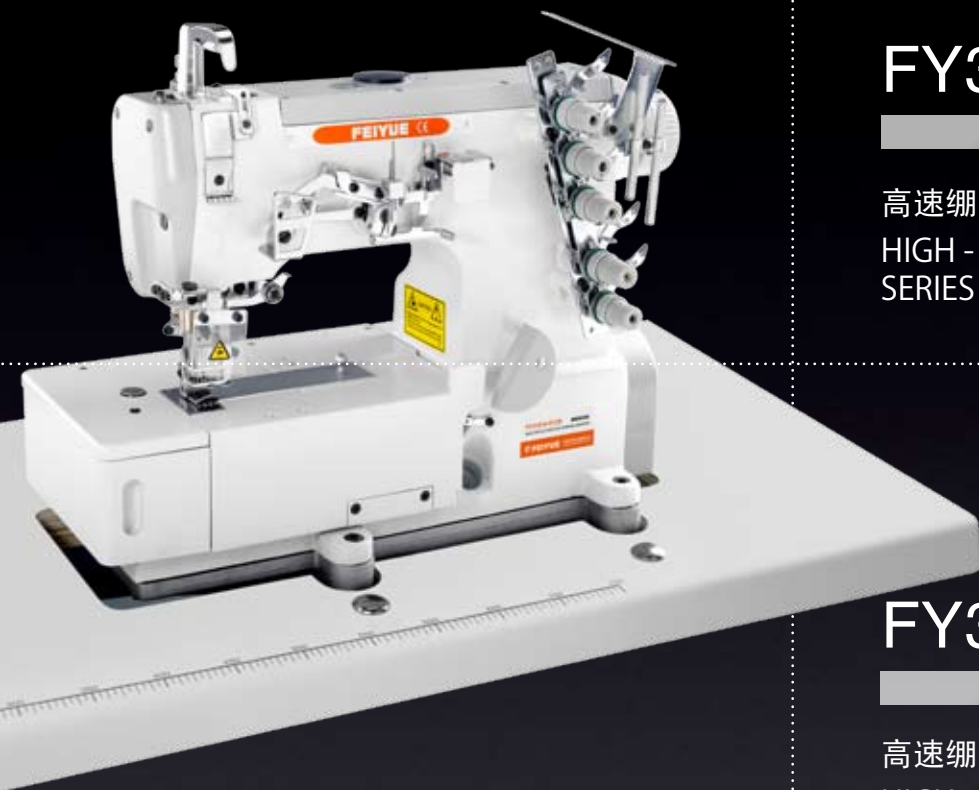
全封闭冷式
自动润滑系统!
*Complete-closed
auto-lubrication system*



- 其基本型可形成多线链式线迹，在基本型的基础上进行派生后，还可用作缝制尼龙拉链、缝绣荷叶花边等专用缝纫机
- This series machine can form basic stitch and covering stitch. Besides the above-mentioned basic stitches, through derivation, it can also be used as special sewing machine to sew nylon zippers and scallops.

- 采用全封闭冷式自动润滑系统，主传动采用同步带传动以确保高转速低噪声性能，对有关零件材质均作轻质化或特殊硬化处理，以提高机器低振、耐磨性能
- This machine adopts complete-closed auto-lubrication system, main drive adopts timing belt to assure high speed and less noise, the concerned parts are through special treatment, to improve its wear-resistance capacity.

FY31008-02BB	3	5	5.6	1.2-3.6mm	1:0.3 1:2.9	5mm	11#	6000r.p.m.
FY31008-03EB	3	5	5.6	1.2-3.6mm	1:0.3 1:2.9	5mm	11#	6000r.p.m.
FY31008-05MD	3	5	5.6	1.2-3.6mm	1:0.3 1:2.9	5mm	11#	5000r.p.m.
FY31008-06AS	3	5	5.6	1.2-3.6mm	1:0.3 1:2.9	5mm	11#	6000r.p.m.
FY32008-07F	3	5	5.6	1.2-3.6mm	1:0.3 1:2.9	5mm	11#	6000r.p.m.
FY32008-08AB	3	5	5.6	1.2-3.6mm	1:0.3 1:2.9	5mm	11#	6000r.p.m.



FY31016 系列

高速绷缝机系列

HIGH - SPEED STRETCH SEWING MACHINES SERIES

FY31016-01CB

高速绷缝机

HIGH - SPEED STRETCH SEWING MACHINES

- 采用全封闭冷式自动润滑系统，主传动采用同步带传动以确保高转速低噪声性能，对有关零件材质均作轻质化或特殊硬化处理，以提高机器低振、耐磨性能
- This machine adopts complete-closed auto lubrication system, main drive adopts timing belt to assure high speed and less noise, the concerned parts are through special treatment, to improve its wear-resistance capacity.

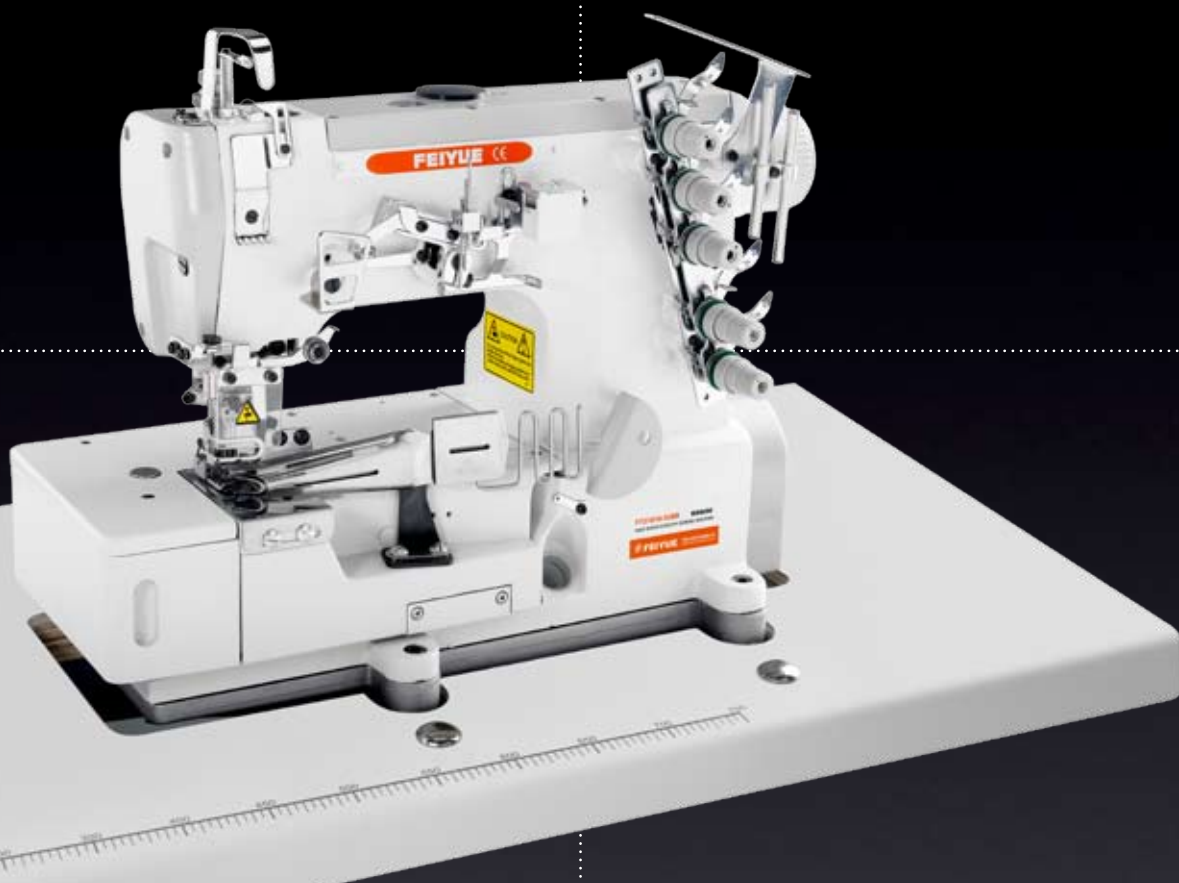
- 其基本型可形成多线链式线迹，在基本型的基础上进行派生后，还可用作缝制尼龙拉链、缝绣荷叶花边等专用缝纫机
- The basic model of this series machine can form basic stitch and covering stitch. On the above-mentioned basic stitches, through derivation, it can also be used as special sewing machine to sew nylon zippers and scallops.

机器信息附表 Information List

FY31016-01CB	2/3	4/5	3.2/4.0/4.8/5.6⊙/6.4	1.2-4.4mm	1:0.5 1:1.3	6.3mm	11#	6000r.p.m.
FY31016-02BB	2/3	4/5	3.2/4.0/4.8/5.6任⊙/6.4	1.2-4.4mm	1:0.5 1:1.3	6.3mm	11#	6000r.p.m.
FY31016-03EB	2/3	4/5	3.2/4.0/4.8/5.6⊙/6.4	1.2-4.4mm	1:0.5 1:1.3	6.3mm	11#	6000r.p.m.
FY31016-04DB	2/4	4/6	5.6⊙/6.4	1.2-4.4mm	1:0.5 1:1.3	6.3mm	11#	5000r.p.m.



FEIYUE YAMATA



FY31016-02BB

高速绷缝机系列

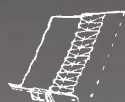
HIGH - SPEED STRETCH SEWING
MACHINES

其基本型可形成多线链式线迹，
还可用作缝制尼龙拉链、缝绣荷
叶花边等专用缝纫机！

*It can sew
nylon zippers and scallops.*



FY31016-01CB
基本型
BASIC MODEL



FY31016-03EB
盖缝
COVER SEAM



FY31016-05/MD
花边松紧带
SEWING ELASTIC
LACE CORD



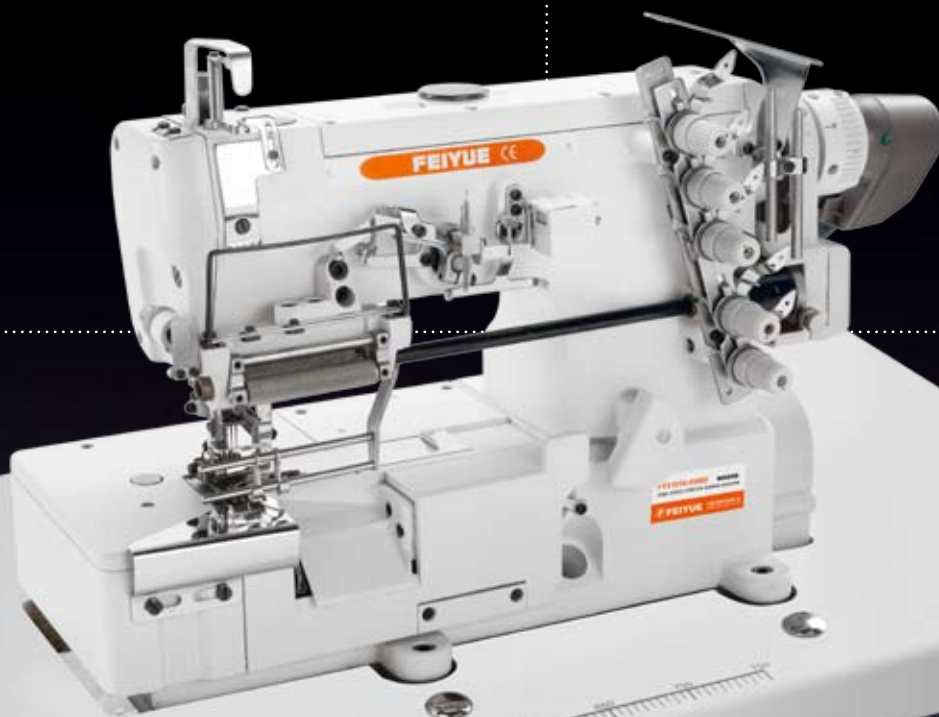
FY31016-06AS
双钩针环缝
DOUBLE CHAIN - STITCH
IN YWO - LOOPER



FY31016-04DB
四针六线基本型
BASIC MODEL



FY31016-02BB
缝滚条
SEWING ROLLED-EDGE



FY31016-05/MD

缝滚条高速绷缝机

HIGH - SPEED STRETCH SEWING
ROOLLED - EDGE MACHINES

低振动! 低噪音!
*Low-vibration
and low-noise*

机器信息附表 Information List

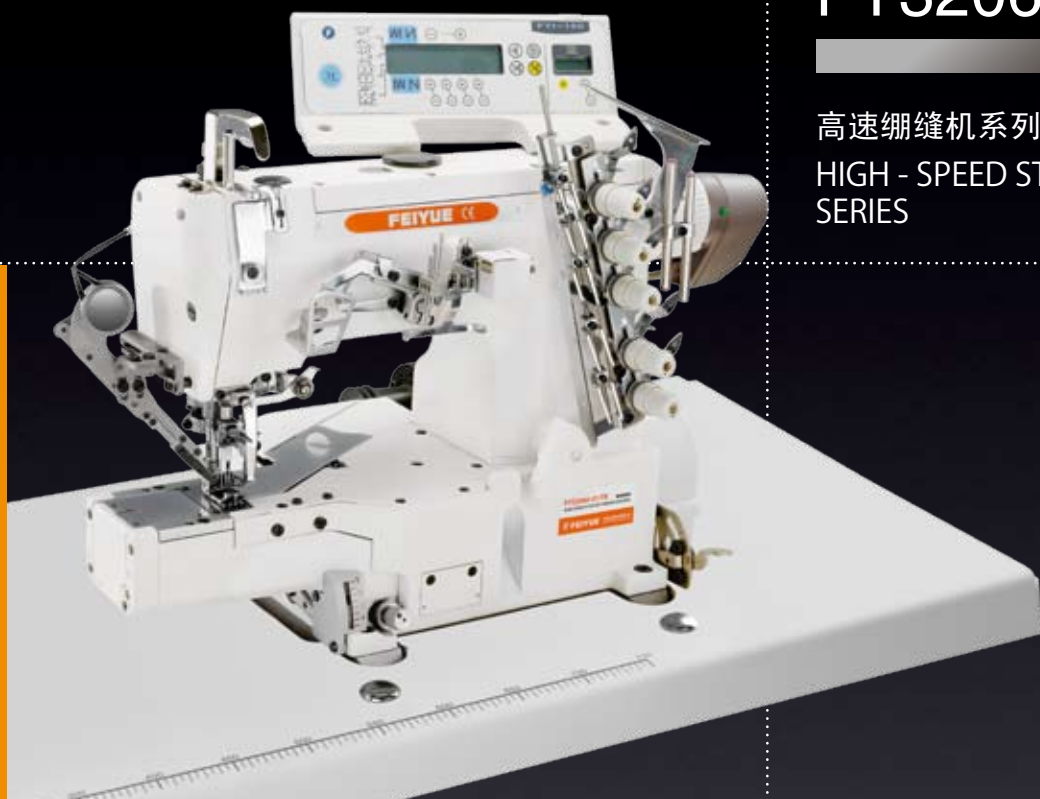
FY31016-05/MD	2/3	4/5	3.2/4.0/4.8/5.6⊙/6.4	1.2-4.4mm	1:0.5 1:1.3	6.3mm	11#	6000r.p.m.
FY31016-06AS	2	4	5.6⊙/6.4	1.2-4.4mm	1:0.5 1:1.3	6.3mm	11#	6000r.p.m.
FY31016-07F	2	3	5.6⊙/6.4	1.2-4.4mm	1:0.5 1:1.3	6.3mm	11#	4500r.p.m.
FY31016-08AB	2/3	4/5	3.2/4.0/4.8/5.6⊙/6.4	1.2-4.4mm	1:0.5 1:1.3	6.3mm	11#	6000r.p.m.



FY32060 系列

高速绷缝机系列

HIGH - SPEED STRETCH SEWING MACHINES SERIES



● 低振动、低噪音，作业舒适本机采用低振动低噪音的构造，高速运转时也可以使缝制人员集中思想舒适作业

● Low-vibration and low-noise promise comfortable operation. The low-vibration and low-noise design of the machine enables the operator to concentrate on sewing works in a more comfortable environment.

● 本系列采用拨盘式差动调整，操作更加简单本缝纫机的正面装配简单的调整拨盘，可以方便地调整差动送布

● Differential feed amount can be easily adjusted by using a dial. With a simplified dial mounted on the front surface of the machine, the differential feed ratio can be adjusted with ease.

机器信息附表 Information List

FY32060-01CB	2/3	4/5	3.2/4.0/4.8/5.6○/6.4	1.2-4.4mm	1:0.5 1:1.3	6.3mm	11#	6000r.p.m.	
FY32060-02BB	2/3	4/5	3.2/4.0/4.8/5.6○/6.4	1.2-4.4mm	1:0.5 1:1.3	6.3mm	11#	6000r.p.m.	
FY32060-03EB	2/3	4/5	3.2/4.0/4.8/5.6○/6.4	1.2-4.4mm	1:0.5 1:1.3	6.3mm	11#	6000r.p.m.	
FY32060-05MD	2/3	4/5	3.2/4.0/4.8/5.6○/6.4	1.2-4.4mm	1:0.5 1:1.3	6.3mm	11#	5000r.p.m.	
FY32060-08AB	2/3	4/5	3.2/4.0/4.8/5.6○/6.4	1.2-4.4mm	1:0.5 1:1.3	6.3mm	11#	6000r.p.m.	

FY32060-02BB

高速绷缝机

HIGH - SPEED STRETCH SEWING
MACHINES SERIES



- 本机采用直径较小筒型机床，适合缝制细筒衣物
- 采用伺服电机，增加上、下线切线装置和抬压脚功能以及准确定位系统，使操作更为方便
- The small diameter of the cylinder makes it possible to sew narrow tubular materials.
- Adopt servo motor, add to upper and lower thread cutting devices, function of presser foot take up and accurate orientation system, easy to operate.

本系列采用拨盘式差动调整
操作更加简单
可以方便地调整差动送布



FY32060-01CB
基本型
BASIC MODEL



FY32060-08AB
下摆折边缝
BOTTOM FOLDING SEAM



FY32606-03EB
盖缝
COVER SEAM



FY32606-05MD
花边松紧带
SEWING ELASTIC
LACE CORD



FY32606-02BB
缝滚条
SEWING
ROLLED-EDGE



FY31007-01

高速绷缝机
HIGH - SPEED STRETCH SEWING
MACHINES



FY31007-02

高速绷缝机
HIGH - SPEED STRETCH SEWING
MACHINES



FY31007-02BB

FY31007-03EB

FY31007-05MD

FY32007-08AB

FY31008-01CB



3



5



5.6



1.2-4mm



1:0.5 1:1.3



5mm



11#



6000r.p.m.

3

5

5.6

1.2-4mm

1:0.5 1:1.3

5mm

11#

4500r.p.m.

3

5

5.6

1.2-4mm

1:0.5 1:1.3

5mm

11#

5000r.p.m.

3

5

5.6

1.2-4mm

1:0.5 1:1.3

5mm

11#

6000r.p.m.

3

5

5.6

1.2-3.6mm

1:0.3 1:2.9

5mm

11#

6000r.p.m.

经销商/Agent



ONE FAMILY
WORLDWIDE

四海一家 中國飛躍

中国飞跃集团
CHINA FEIYUE GROUP

地址：中国浙江省台州市椒江机场中路109号
Add: NO.109 Middle Airport Rd. taizhou City. Zhejiang Province. P.R.China
电话 Tel: 0576-88155811/88176395
传真 Fax: 0576-88155800/88155809 电子邮箱 Email:sales@feiyue.cn
网址 <http://www.feiyuegroup.com> 邮政编码 Post Code: 318010

- 本手册所列之产品可能会因改良而有所变动,以随机说明书为准,恕不另行通知。
- 由于印刷原因,产品实际颜色可能稍有差异,敬请谅解。
- 中国飞跃集团公司保留对此资料的解释权。