



FEIYUE YAMATA

Freely adjustment
 Various sewing styling
 Various designs
 Newly developed flower stitching
 Wide range of applications
 Durable and uniform
 Complete closed
 Auto-lubrication
 High speed and less noise
 Easy operations

Flatbed, multi needles
 Multi purpose
 Be adjust freely
 Perfect style
 Automatic oiling

Double chain
 Horizontal
 Wide variety of decorative
 Various sewing styles
 Multi-needle
 Elastic and waistband
 Left or right inclining
 Suitable for flexure
 The different trumpet

Neat and elegant
 High efficiency
 Steady quality
 Steady performance
 Easy operation
 Various folder
 Beauty and tidiness

飞跃高速多针机系列

MULTI - NEEDLE CHAIN STITCH SEWING MACHINE SERIES

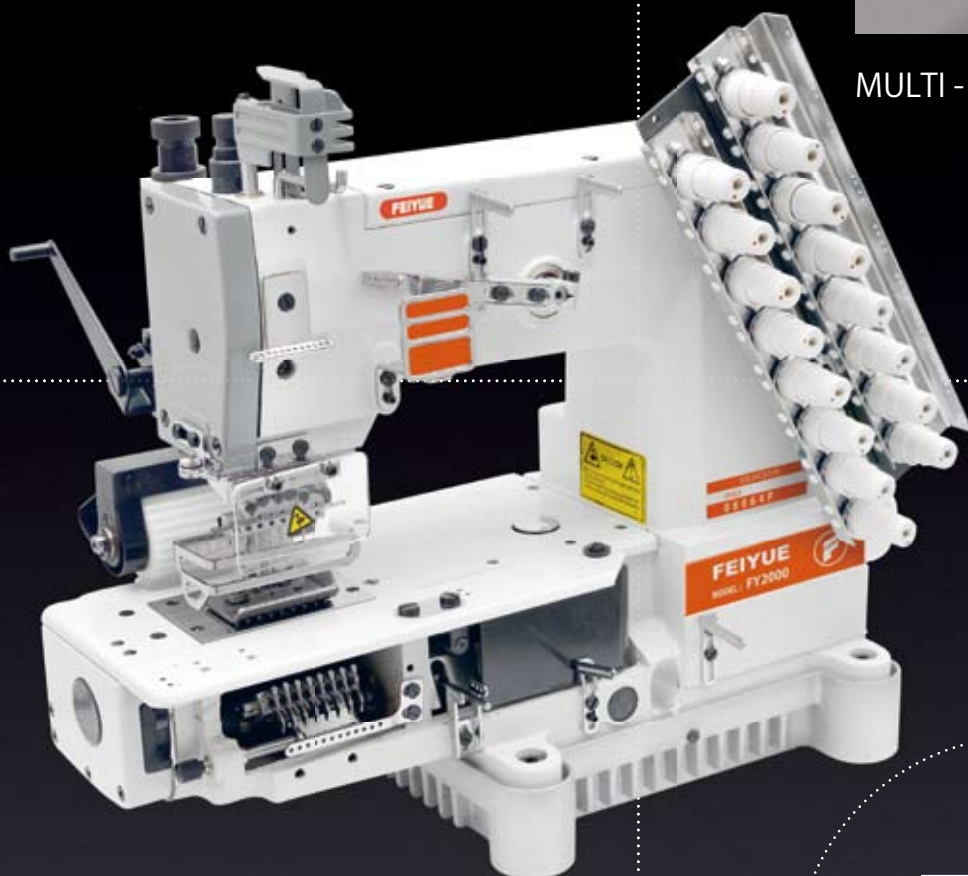
MULTI-NEEDLE CHAIN STITCH



FEIYUE YAMATA

FY2000 系列

MULTI - NEEDLE SERIES



FY2000-8

多针机系列

MULTI - NEEDLE SERIES



FY2000-8 线迹



采用优质数控伺服电机

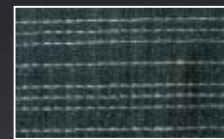
采用全封闭冷式自动润滑系统,主传动采用同步带传动以确保高转速低噪音性能,对有关零件材质均作轻质化或特殊硬化处理,以提高机器低震、耐磨性能

适用于缝制针织内衣、运动衣裤、T恤衫、胸罩、束腰裙松紧带等各种弹性织物的领口袖口等

With the adoption of the servo-motor.

This machine adopts complete-closed auto lubrication system ,main drive adopts timing belt to assure high speed and less noise, the concerned spare parts are through special treatment to improve its wear-resistance capacity.

Suitable for sewing the collar edge and sleeve-cuff of the knitted underwear, sports skirt and trousers, T-shirt, elastic tape of skirts and etc.



FY2000-13 线迹

FY2000-13

多针机系列
MULTI - NEEDLE SERIES

采用优质数控伺服电机
With the adoption of the servo-motor.

机器信息附表 *Information List*

							
FY2000-4	4	8	1/3"	1.4-3.6	12	#11-#14	4500r.p.m.
FY2000-6	6	12	---	1.4-3.6	12	#11-#14	4500r.p.m.
FY2000-8	8	16	---	1.4-3.6	12	#11-#14	4500r.p.m.
FY2000-12	12	24	1/4"-3/16"	1.4-3.6	12	#11-#14	4500r.p.m.



FEIYUE YAMATA



FY2000-23

多针机系列
MULTI - NEEDLE SERIES

高转速低噪
High speed
& less noise

采用全封闭冷式自动润滑系统,主传动采用同步带传动以确保高转速低噪音性能,对有关零件材质均作轻质化或特殊硬化处理,以提高机器低震、耐磨性能

This machine adopts complete-closed auto lubrication system ,main drive adopts timing belt to assure high speed and less noise, the concerned spare parts are through special treatment to improve its wear-resistance capacity.

机器信息附表 Information List

							
FY2000-13	13	24	1/8"	1.4-3.6	12	#11-#14	4500r.p.m.
FY2000-17	17	24	1/8"	1.4-3.6	12	#11-#14	4500r.p.m.
FY2000-23	23	24	1/8"	1.4-3.6	12	#11-#14	4500r.p.m.



FY2000-4/VWL

带松紧车缝

ELASTIC LACE CORD SEAM



FY2000-4/VWL 线迹

全自动给油，勾针纵向运动机构，筒型车台利于圆筒型衣物的缝纫

前松紧带送带滚轮装置能依据机台的运转速度送带，可准确控制松紧带的长度与松紧度，操作简便

适用于慢跑裤、运动裤、男女内裤等裤头的松紧带车缝

VWL : 前松紧带送带装置

可选择的辅助件:

FH : 下固定式送带盘

VAD : 气动式抬压脚装置

F411滚边喇叭 (三卷式)

F413滚边喇叭 (二卷式)

Optional attachment:

FH : tape feeding plate (below)

VAD : Pneumatic presser lifting device

F411:roller edging trumpet (three rollers)

F413:roller edging trumpet (two rollers)

Automatic oiling, back and forth looper driving mechanism , Cylinder bed meet the needs for tube-shaped cloth's sewing.

Elasticity feeding device can be accurately controlled according to sewing speed of machine. The length and tension of elasticity could be accurate adjust with easy operations.

Suitable for elasticity sewing of , jogging pants, sportswear, briefs etc.

VWL: elasticity feeding device



FEIYUE YAMATA



FY2000 - 4/VSF 线迹

FY2000-4/VSF

门襟车缝

SHIRT FRONT SEAM

全自动给油, 勾针纵向运动机构

Automatic oiling Back and forth looper driving mechanism

全自动给油,勾针纵向运动机构,筒型车台利于圆筒型衣物的缝纫,适宜各种四针或二针的衬衫门襟车缝

由于加装喇叭使用在一个工序即可完成车缝,另可选择不同的喇叭做不同的车缝样式

VSF:门襟车缝装置

可选择的辅助件:

- 1.FH : 下固定式送带盘
- 2.VAD : 气动式抬压脚装置
- 3.滚边器 : F529 , F529P F529Q

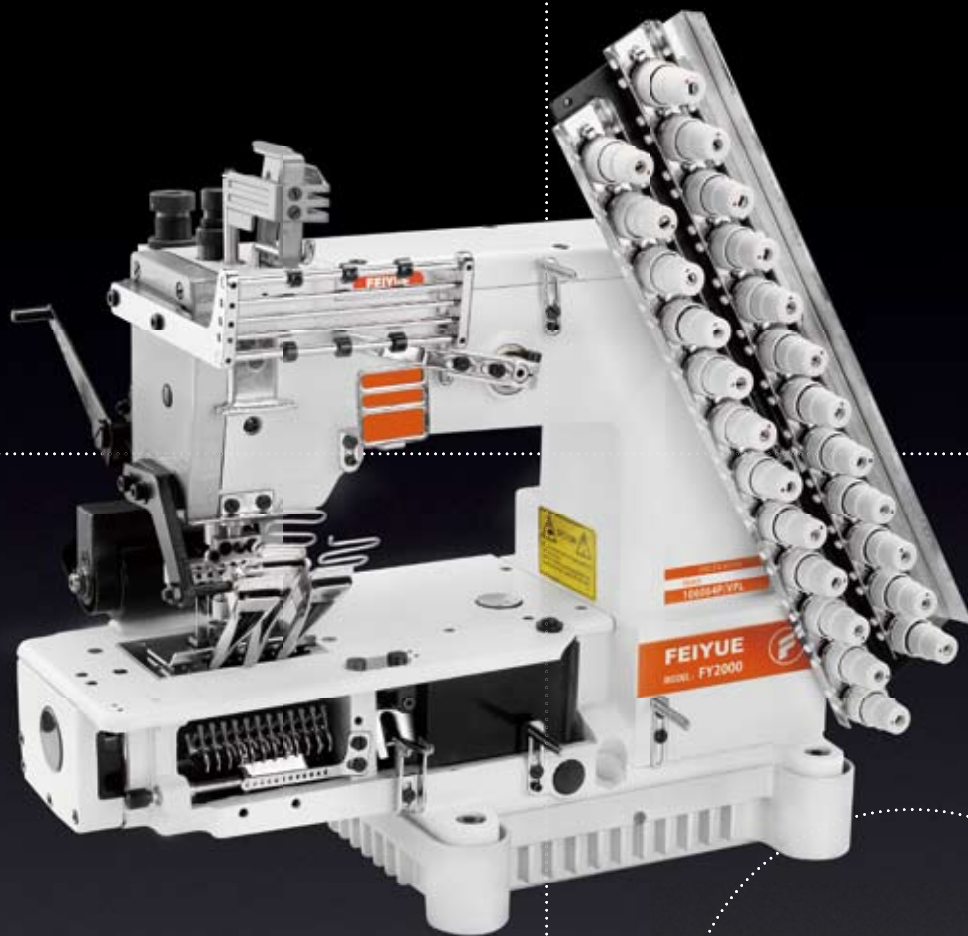
Automatic oiling, back and forth looper driving mechanism , Cylinder bed meet the needs for tube-shaped cloth's sewing, suitable for 2 or 4 needle shirt fronting.

The sewing could be achieved in one -step with the trumpet equipped , the different stitch pattern could be achieved with the different trumpet.

VSF: shirt fronting device

Optional attachment :

- 1.FH: tape feeding plate(below)
- 2.VAD: Pneumatic presser lifting device
- 3.roller - edging, F29, F529P F529Q



FY2000-6/VPL 线迹

FY2000-6/VPL

贴条带车缝

TAPE - ATTACHING SEAM

美观整齐 效率高 品质稳定

*High efficiency
& steady quality*

主要用于运动衣裤、装饰贴条带,能一次车缝三条带,美观整齐,效率高,品质稳定

平松紧带、环状松紧带均可使用可选择的辅助件：

LSA：固定式上送带盘装置

VAD：气动式抬压脚装置

喇叭编号：F308 (8MM)

F309 (9MM)

F310 (10MM)

F312 (12MM)

Suitable for sports wear sewing and ornament tape attaching , 03-tapes could attached neat and elegant in one step. High efficiency and steady quality.

Flat elastic cord and looper elastic cord could be used.Optional attachment:

LSA: tape feeding plate(up)

VAD: Pneumatic presser lifting device.

Trumpet code : F308 (8MM)

F309 (9MM)

F310 (10MM)

F312 (12MM)



FEIYUE YAMATA



FY2000 - 12/VPQ 线迹

FY2000-12/VPQ

松紧线抽皱缝

ELASTIC THREAD SHIRRING SEWING

能有效控制松紧带的松紧度，
可正确且平均的进行松紧带车缝

The tension of elastic thread could be controlled efficiently, the accurate elastic thread sewing could be achieved.

美观整齐 效率高 品质稳定

*High efficiency
& steady quality*

适用于如女用内衣裤的松紧带或
蕾丝松紧带车缝

*Suitable for the elastic thread or
lace cord sewing of women briefs.*



FY2000 - 12/VPT 线迹

FY2000-12/VPT

打折布车缝
FOLDING SEAM

可自由调整导边器组合，右倾或左倾均能缝出完美的款式
适用于如衬衫、连衣裙、儿童衫等细条打摺用

The combination of side guider could be adjust freely, the perfect style could achieve both by left or right inclining.
Suitable for flexure of shirt, one-piece dress and child-wear

机器信息附表 Information List

							
FY2000-4/VSF	4	8	1/4"-3/4"-1/4"	1.4-3.6	12	#11-#14	4500r.p.m.
FY2000-4/VWL	4	8	1/3"	1.4-3.6	12	#11-#14	4000r.p.m.
FY2000-6/VPL	6	12	1/4"	1.2-3.6	12	#11-#14	4500r.p.m.
FY2000-12/VPQ	12	12	1/4"-3/16"	1.4-3.6	12	#11-#14	1500r.p.m.



FEIYUE YAMATA



FY2000 - 12/VSM 线迹

FY2000-12/VSM

装饰线车缝

ORNAMENTAL THREAD SEAM

适用于女式衬衫、衣裙、童装的装饰缝，也适用于各种床上用品的装饰缝

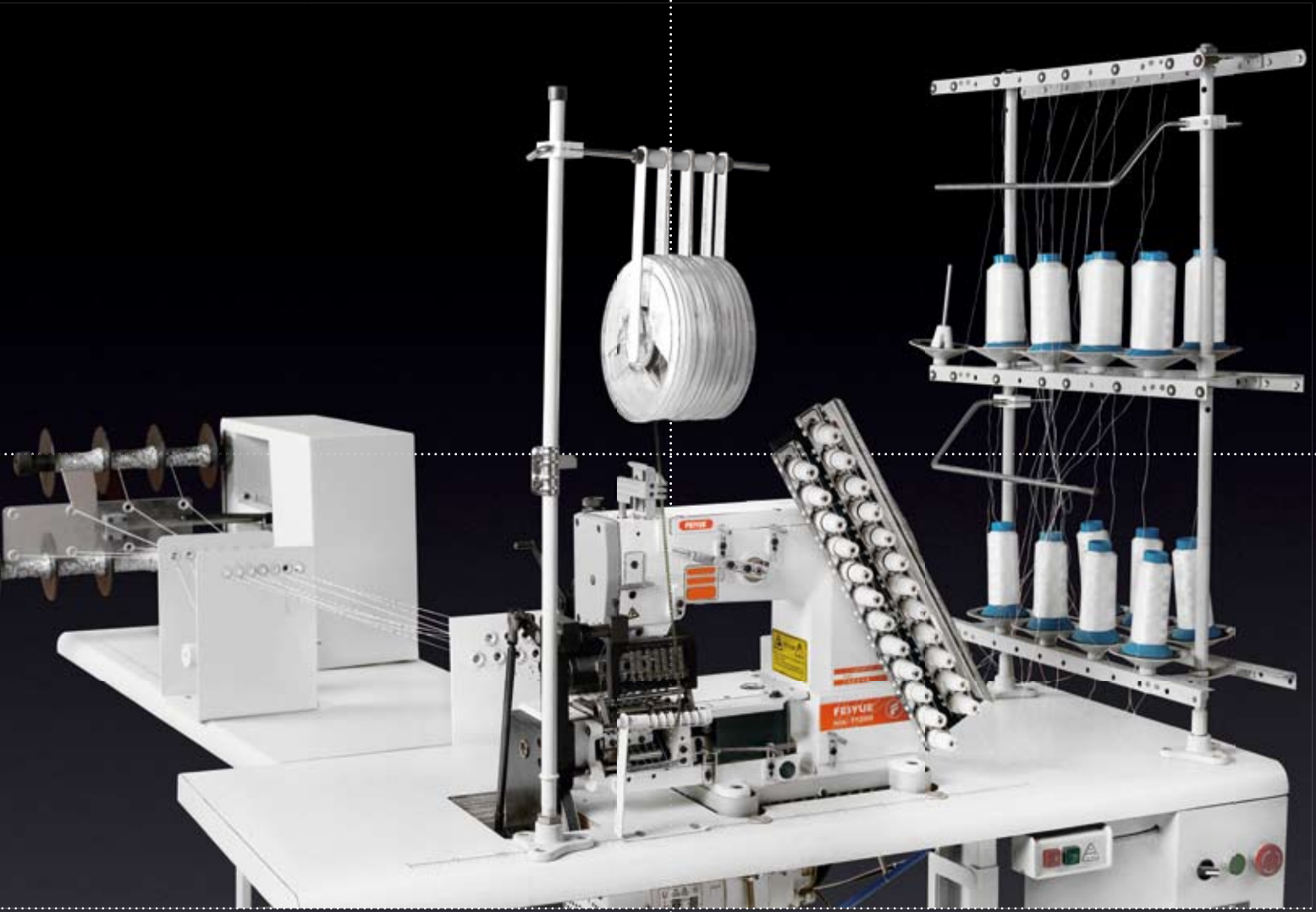
Specially good for attaching ornament thread on shirts, dresses, child-wear as well as bedding.

采用优质数控伺服电机

With the adoption of the servo-motor.

整机配有五种变化花盘
能缝出几十种不同的花形

Tens of patterns could be sewed with 5 mode equipped



FY2000-8075

珠片机
SEQUIN MACHINE



FY2000-8075 线迹

缝珠片和绕线自动完成,一台机器能缝7组珠片线,效率高,性能稳定

The pinpoint sewing and thread rolling could be achieved automatically. One set machine could sew 7 group pinpoint stitch, of which has high efficiency and steady performance.

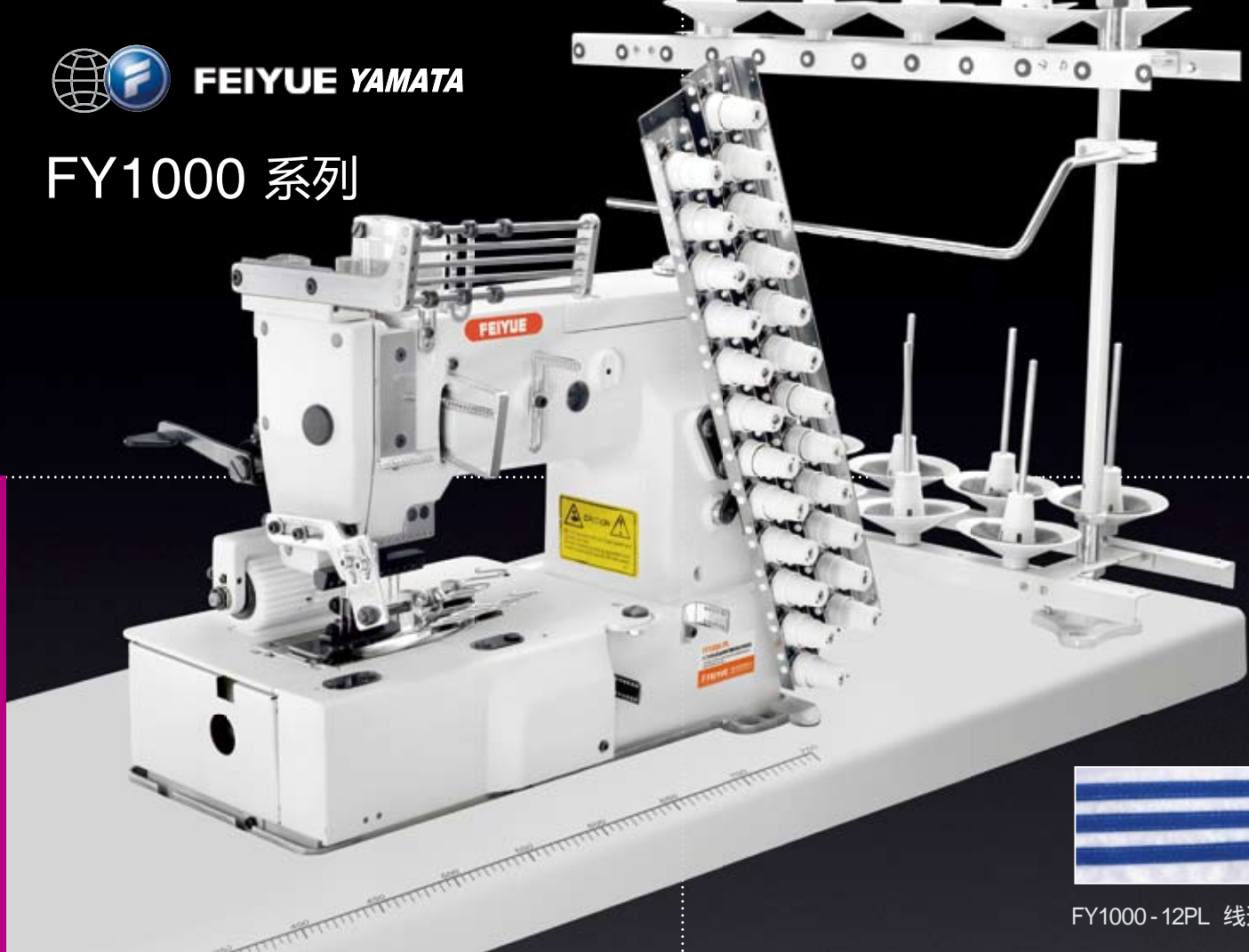
机器信息附表 Information List

							
FY2000-12/VPT	12	24	1/4"	1.4-3.6	12	#11-#14	2500r.p.m.
FY2000-12/VSM	12	48	3/16"	1.4-3.6	12	#11-#18	2000r.p.m.
FY2000-8075	7	14	9.5"	--	10-45	--	1000r.p.m.



FEIYUE YAMATA

FY1000 系列



FY1000 - 12PL 线迹

FY1000-12/PL

平台型勾针纵向双重环缝链式贴条机
BED DOUBLE CHAIN STITCH
SEWING MACHINE
(FOR ATTACHING LINE TAPES)

适用于缝制针织内衣、运动衣裤、t恤衫、胸罩、束腰裙松紧带等各种弹性织物的领口袖口等
其基本型可形成多线链式线迹，在基本型的基础上进行派生后，还可用作缝制尼龙拉链、缝绣荷叶花边等专用缝纫机

This series machine can form basic stitch and covering stitch. Besides the above-mentioned basic stitches, through derivation, it can also be used as special sewing machine to sew nylon zippers and scallops. Suitable for sewing the collar edge and sleeve-cuff of the knitted underwear, sports skirt and trousers, T-shirt, elastic tape of skirts and etc.

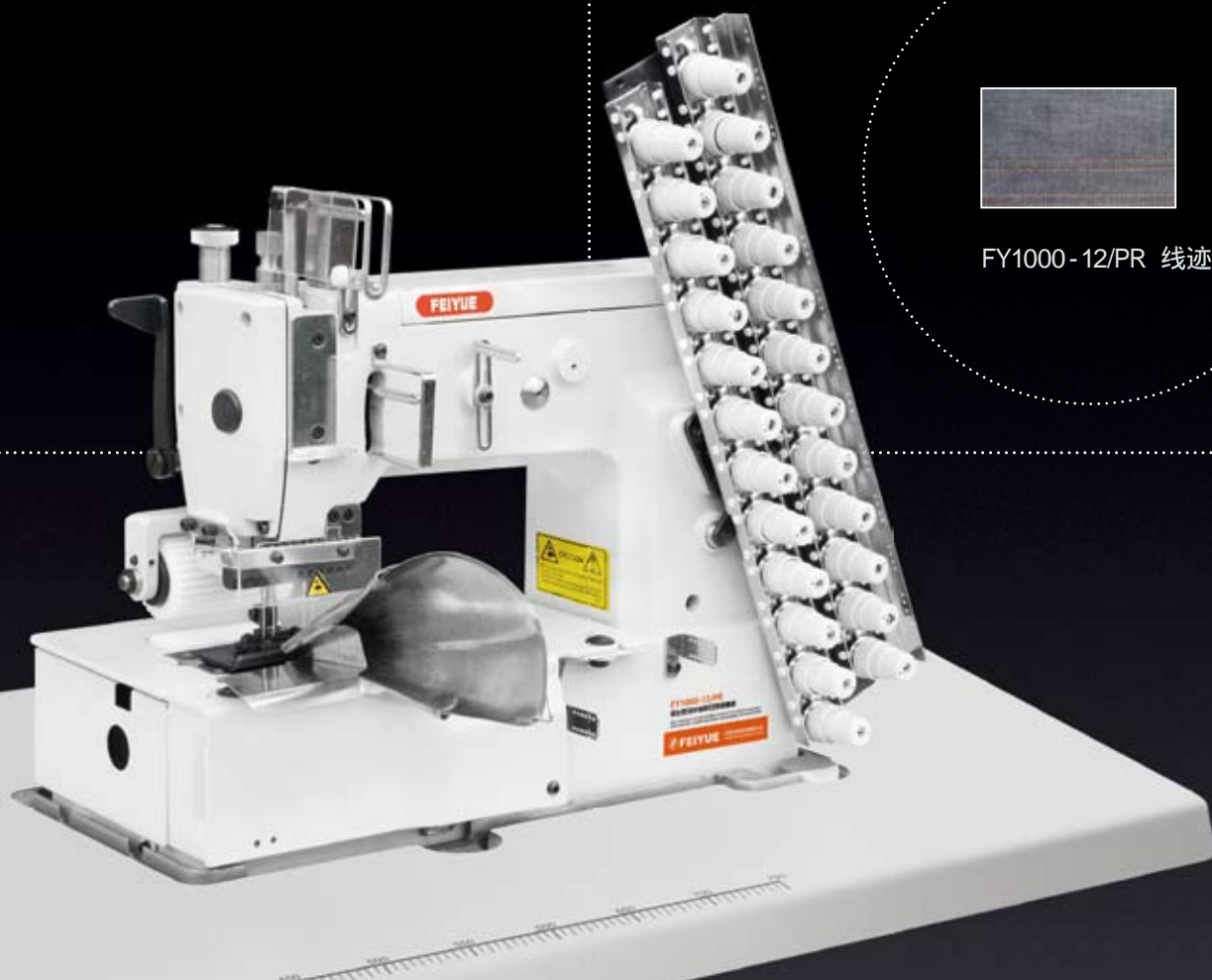
主要用于运动衣裤、装饰贴条带，能一次车缝三条带，美观整齐，效率高、品质稳定

Suitable for sports wear sewing and ornament tape attaching, 3-tapes could attached neat and elegant in one step. High efficiency and steady quality.

喇叭编号 F308 (8MM) F309 (9MM)
Trumpet code F310 (10MM) F312 (12MM)

采用全封闭冷式自动润滑系统，主传动采用同步带传动以确保高转速低噪声性能，对有关零件材质均作轻质化或特殊硬化处理，以提高机器低振、耐磨性能
采用优质数控伺服电机

This machine adopts complete-closed auto-lubrication system, main drive adopts timing belt to assure high speed and less noise, the concerned parts are through special treatment, to improve its wear-resistance capacity.
With the adoption of the servo-motor.



FY1000-12/PR 线迹

FY1000-12/PR

平台型勾针纵向双环裤腰机

MULTI-NEEDLE FLAT BED DOUBLE CHAIN
STITCH SEWING MACHINE WITH VERTICAL
LOOPER MOVEMENT MECHANISM
(FOR WAISTBAND)



FY1000

基本型 BASIC MODEL

FY1000-4

四针基本型 BASIC MODEL FOR 4 NEEDLES

FY1000-6

六针基本型 BASIC MODEL FOR 6 NEEDLES

FY1000-8

八针基本型 BASIC MODEL FOR 8 NEEDLES

FY1000-10

十针基本型 BASIC MODEL FOR 10 NEEDLES

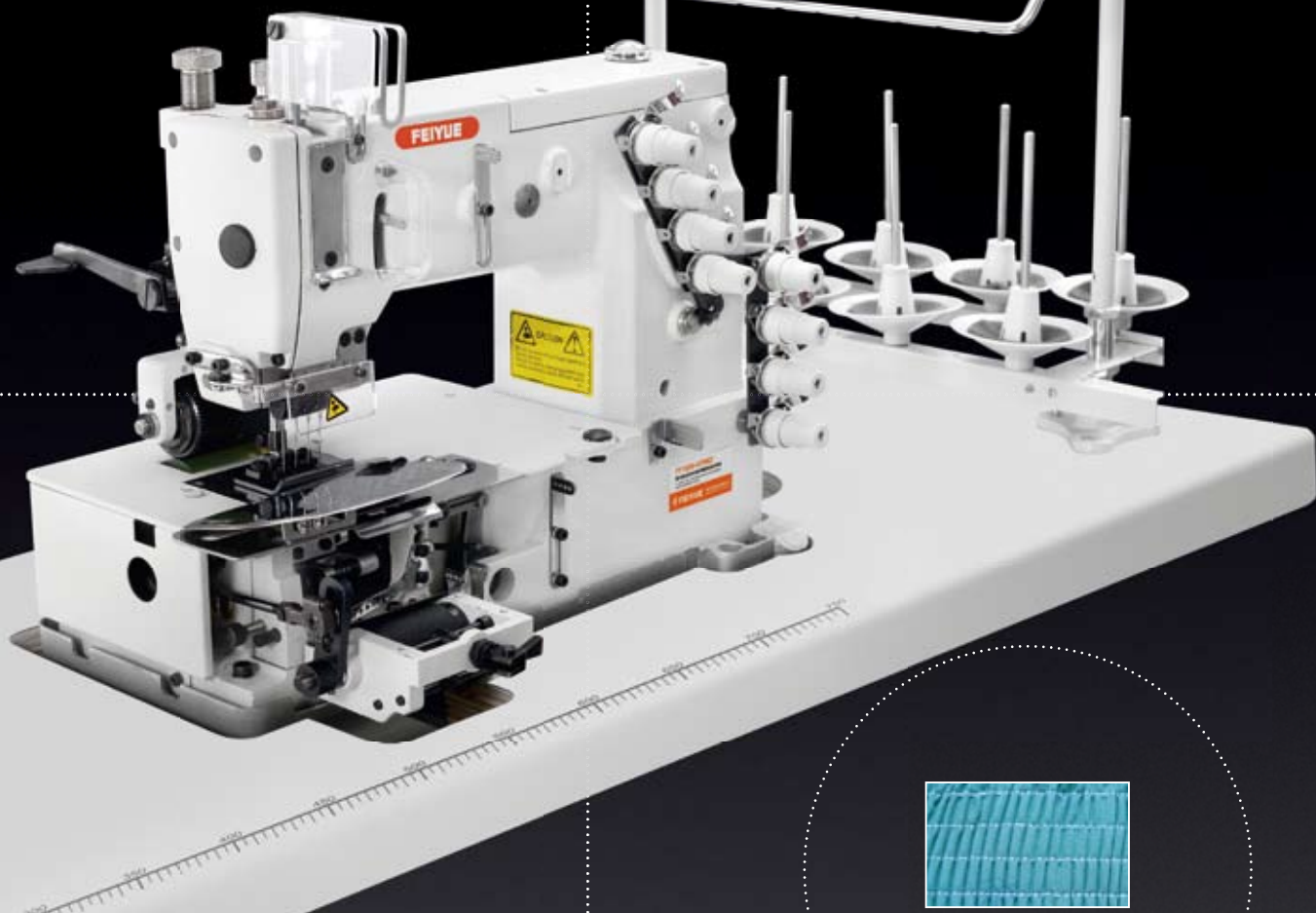
FY1000-12

十二针基本型 BASIC MODEL FOR 12 NEEDLES

FY1000-3PL



FEIYUE YAMATA



FY1000 - 4/PMD 线迹

FY1000-4/PMD

平台型勾针纵向双重环缝链式车缝
BED DOUBLE CHAIN STITCH SEWING
MACHINE (METERING DEVICE)

适用于慢跑裤、运动裤、男女内裤等裤头的松紧带车缝

F411 : 滚边喇叭 (三卷式)

F413 : 滚边喇叭 (二卷式)

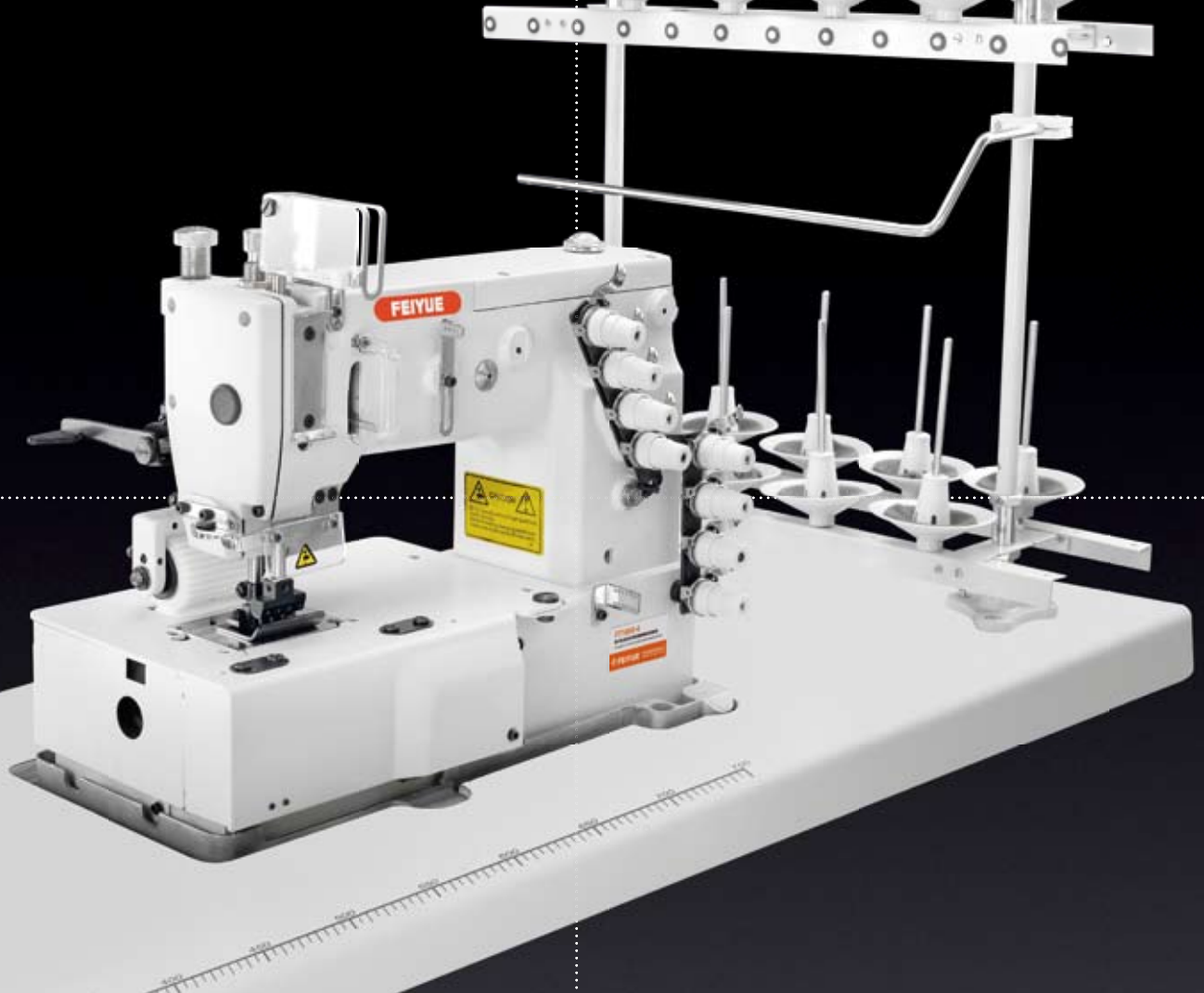
Easy operation for elastic inserting and attaching on waistband of jogging pants, sportswear, briefs etc...

F411: Tape binding (2 volume)

F413: Tape binding (3 volume)

机器信息附表 Information List

FY1000	2	4	3/16,1/4	1.1-1.3	1.5/8	10	34	4500r.p.m.	
FY1000-4	4	8	1/4,1/2	1.1-1.3	1.5/8	10	34	4500r.p.m.	
FY1000-6	6	12	3/16,1/4,1/2	1.1-1.3	1.5/8	10	34	4500r.p.m.	
FY1000-8	8	16	1/4,1/2	1.1-1.3	1.5/8	10	27	4000r.p.m.	
FY1000-10	10	20	3/16,3/8,9/16,1/4,1/2	1.1-1.3	1.5/8	10	27	4000r.p.m.	
FY1000-12	12	24	3/16,9/16,1/4,1/2	1.1-1.3	1.5/8	10	34	4000r.p.m.	



FY1000-4

四针平台型勾针纵向双重环缝链式缝纫机
4-NEEDLE FLAT - BED DOUBLE CHAIN
STITCH SEWING MACHINE

FY1000系列为平台式多针机,上松紧、门襟滚条、上腰、装饰缝等。适用于内衣、运动服、女装、工作服、室内装饰品等

FY1000 series are a flatbed, multi needles, double chainstitch machine, These series are multi-purpose machine for attaching elastic, attaching waistband, sewing the front of shirts, attaching line tapes, smocking and shirring etc... which are ideal for underwear, sportswear, lady's clothes, interior decorated goods(contains, table-clothes etc..)

附加装置：

- MR :打缆装置
- PSF :门襟装置
- PSSM :打缆和装饰装置
- ET :下线为松紧线专用
- PL :滚条装置
- WB :上腰装置
- PSM :装饰装置
- MD-1 :前松紧带送布调整装置

OPTION：

- MR: Machine with Ruffling Device
- WB: Machine for attaching Waistbands
- PSF: Machine for shift fronting
- PSM: Machine for smocking
- PSSM: Machine for simultaneous shirring + smocking
- PL: Machine for attaching Line Tapes
- ET: Looper thread elastic model
- MD-1: Metering Device

可选针位 (Selected needle gauge)：

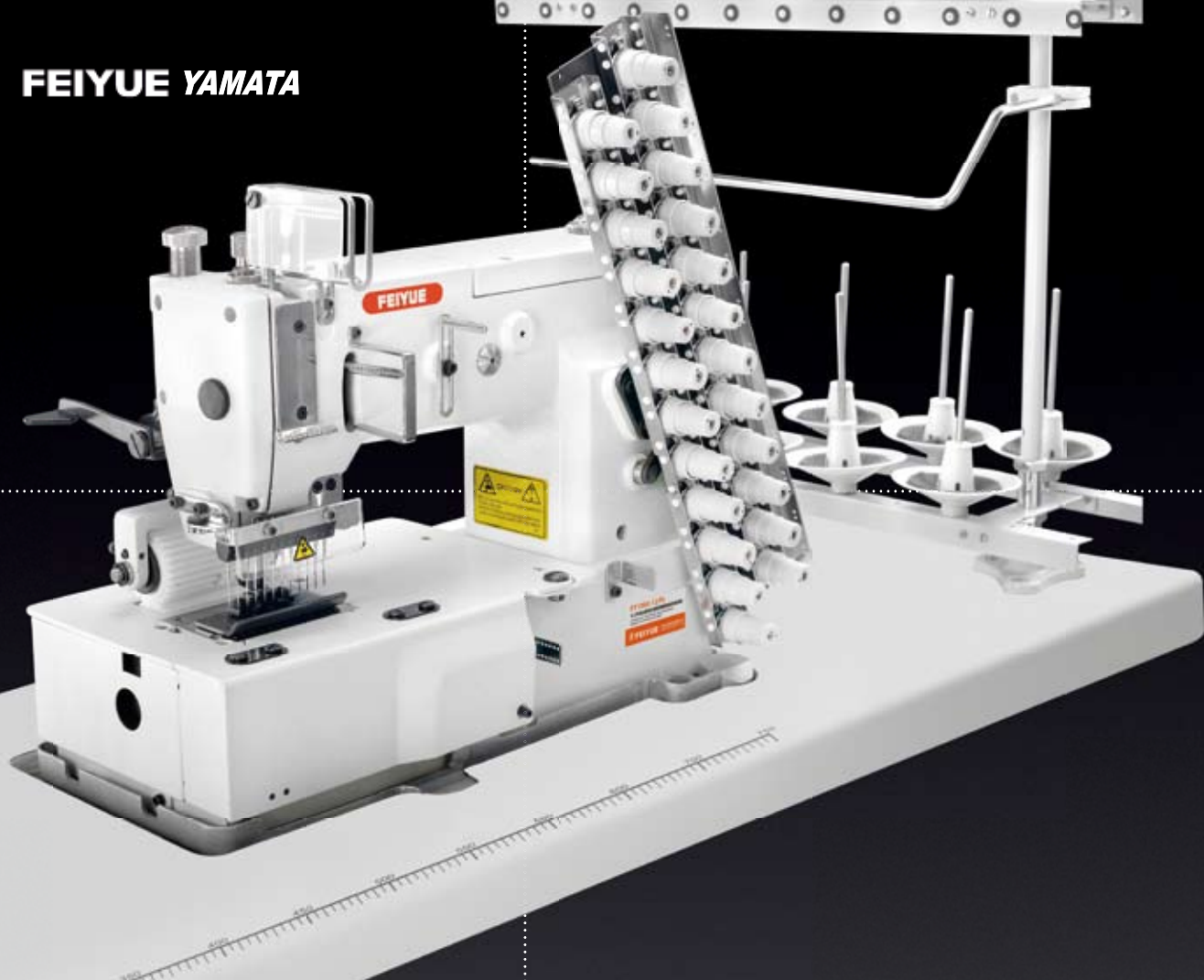
- 3/16×4N,1/4×4N,5/16×4N,1/8×4N,7/16×4N,1/2×4N,
- 3/16×1/2×3/16,3/16×5/8×3/16,3/16×3/4×3/16,
- 3/16×1"×3/16,1/4×1/2×1/4,1/4×5/8×1/4,
- 1/4×3/4×1/4,1/4×7/8×1/4,1/4×1"×1/4,



FY1000系列 线迹



FEIYUE YAMATA



FY1000-12/VPT

平台型勾针纵向双重环缝链式折布车
BED DOUBLE CHAIN STITCH SEWING
MACHINE
(TUCK FABRIC SEAMING)

适用于运动衣裤、装饰贴条带,能一次车缝三条带,美观整齐

喇叭型号 :

F308 (8mm) F309(9mm)

F310(10mm) F312(12mm)

It is mostly used to the sportswear, decoration tape attaching which can sew three tapes once , and it is beauty and tidinese.

Tape binding number:

F308 (8mm) F309(9mm) F310(10mm) F312(12mm)



FY1000-12/VPT

打折布车缝
FOLDING SEAM



FY1000-12/VPT 线迹

美观整齐 效率高 品质稳定

*High efficiency
& steady quality*



FY1500-20C 线迹



FY1500-20C

双针平台型弯针横向双重环缝带刀裤耳机
DOUBLE NEEDLE FLAT - BED MAKING
BELT LOOP WITH FRONT FABRIC CUTTER
(THE WIDTH OF BELT LOOP)

裤耳宽度
loop size
8mm-18mm



FEIYUE YAMATA

可选针位

Selected needle gauge

1-1/4, 1-1/2, 1-3/4



FY1500-8P

平台型弯针横向双重环缝链式裤腰缝纫机
BED DOUBLE CHAIN STITCH MACHINE WITH
HORIZONTAL LOOPER MOVEMENT MECHANISM

适用于从中厚料到厚料使用,牛仔的卷边缝、上腰、上松紧等车缝。独自开发的后拖轮能保证高速运转时送布均衡,线迹美观

Lap seaming, attaching waistbands and line tapes, and inserting elastic. Major features of BH15 series are wide range of applications on mid heavy and heavy weight fabric and special unique rear puller mechanism. These features enable BH15 series to produce durable and uniform stitches on mid heavy and heavy weight fabrics.



FY2000-4/VSF 线迹

FY1500-8P/PSF

平台型弯针横向双环门襟机
 FLAT BED DOUBLE CHAIN STITCH SEWING
 MACHINE WITH HORIZONTAL LOOPER
 MOVEMENT MECHANISM
 (FOR SHIRT FRONTING)

附加装置：

- 1500-8PR : 后拖轮的下轮左右分开，便于转弯缝 (4针)
- 1500-3PTF : 带后拖轮，特殊压脚 (3针)
- 1500-2L : 2针滚条
- M-1 : 前送松紧带装置



Option:

- 1500-8PR : Machine with 2 independent lower rollers and a rear puller (4 needle machine for waistbanding and curve seaming)
- 1500-3PTF : Machine with rear puller and tractor presser foot (3 needle machine for lap seaming)
- 1500-2L : 2 needle machine for line tape attaching
- MD-1 : Metering Device

经销商/Agent



ONE FAMILY
WORLDWIDE

四海一家 中國飛躍

中国飞跃集团
CHINA FEIYUE GROUP

地址：中国浙江省台州市椒江机场中路109号

Add: NO.109 Middle Airport Rd. taizhou City. Zhejiang Province. P.R.China

电话 Tel: 0576-88155811/88176395

传真 Fax: 0576-88155800/88155809 电子邮箱 Email:sales@mail.tzptt.zj.cn

网址 <http://www.feiyuegroup.com> 邮政编码 Post Code: 318010

- 本手册所列之产品可能会因改良而有所变动,以随机说明书为准,恕不另行通知。
- 由于印刷原因,产品实际颜色可能稍有差异,敬请谅解。
- 中国飞跃集团公司保留对此资料的解释权。