



FEIYUE YAMATA

Cotton  
chemical fiber materials  
thick materials  
medium-thick materials

Widely applied  
Easy to operate  
Computer controlled  
High speed

Will not be warped  
Will not be shrunk  
Recycling oil supply  
Sewing tension  
Neat & beautiful stitch  
Auto lubricated  
Excellent performance  
Many optional parts

Efficient effect  
Eliminate pucker thoroughly  
Decrease ironing  
Economical cost  
Easy to learn  
Improved quality

Reliable  
Durable  
Advanced noise-decreasing device  
Automatic thread trimmer  
Automatic bar tacking  
Automatic oil supply  
Automatic retrieving device

## 飞跃高速平缝机系列

High-Speed Lockstitch  
Sewing Machine Series

# Lockstitch



FEIYUE YAMATA



广泛应用于装饰缝!  
大大降低用线成本!

Widly used  
in acrody sewing.

# FY9101

微油电脑高速平缝机

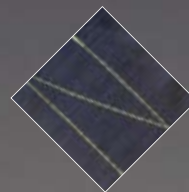
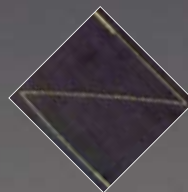
TINY-OIL COMPUTER CONTROLLED  
HIGH-SPEED LOCKSTITCH  
SEWING MACHINES

采用电脑控制的高速平缝机简化了普通平缝机的操作程序，大大提高了生产效率

适用于不同物料，凭借先进的降噪设计，使机器在每分钟5000转高速运转下仍可保持可靠性与耐用性

The high - speed lockstitch sewing machine adopts computer control system, which simplifies common working process and greatly upgrades productivity.

The machine is applicable for different materials, and with its advanced noise - decreasing device, it remains reliable and durable at the high speed of 5000 r.p.m



FY9101

FY9102



DBx1,9#-18#



5000r.p.m.



5mm



10#



5.5mm -15mm



41/38kg



670×272×527



DBx1,9#-18#

4000r.p.m.

5mm

10#

5.5mm -15mm



41/38kg

670×272×527



具有自动剪线功能、并可配用多种选购配件

The machine can automatical cut thread. Many optional part are available to purchase

## FY9102

无油电脑高速平缝机

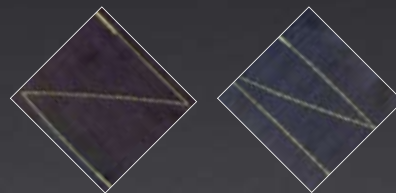
OIL-FREE COMPUTER CONTROLLED  
HIGH-SPEED LOCKSTITCH  
SEWING MACHINES

采用电脑控制的高速平缝机简化了普通平缝机的操作程序，大大提高了生产效率

本机选用迅速、操作简单、可靠性高的切线机构，具有自动剪线功能、并可配用多种选购配件

The high-speed lockstitch sewing machine adopts computer control system, which simplifies common working process and greatly upgrades productivity.

Equipped with reliable and easy to use thread trimmer, the machine can automatically cut thread. Many optional part are available to choose.



选用上等材质，更加可靠耐用

适用于不同物料，凭借先进的降噪设计，使机器在每分钟4000转高速运转下仍可保持可靠性与耐用性

复合材料应用于针杆套、旋梭使其在无油状态达到耐磨自动剪线、倒缝、拔线提升压脚功能

具有低张力缝制功能适应多种类物料工序的变化，保证高质量的缝制

The machine is more reliable and durable with the utilization of super material.

The machine is applicable for different materials, and with its advanced noise-decreasing device, it remains reliable and durable at the high speed of 4000 r/min.

Composite material applied in the needle bar cover and hook, which ensure it's hard wearing under oil free condition.

Automatic thread trimmer, reverse-feed and presser foot lift.

With the function of sewing at low tension, the machine provides quick responsiveness to changes in types of material and working processes, thus ensuring high quality sewing.





FEIYUE YAMATA



本机适用于不同缝料

The machine is applicable for different materials

# FY8700-5-6D

电脑高速平缝机

COMPUTER CONTROLLED  
HIGH-SPEED LOCKSTITCH  
SEWING MACHINES

## FY8700-5-3D 自动剪线

FY8700-5-3D can trim thread auto matically

## FY8700-5-6D 自动剪线、自动固缝

FY8700-5-6D is capableof automatic thread trimming, bar - tacking

## FY8700-5-6D1 自动剪线、自动固缝、自动抬压脚

FY8700-5-6D1 has the function of automatic thread trimming, bar tacking and presser foot lifting.

本机适用于不同缝料，并凭借先进的降噪设计，使机器在每分钟5000转高速运转下仍可保持可靠性与耐用性

The machine is applicable for different materials and with its advanced noise-decreasing device, it remains reliable and durable at the high speed of 5000 r.p.m

机器信息附表 Information List

	Ⓜ	📏	🕒	±	📏	📏	💧	🔄	⚖️	📏
FY8700-5-6D	★	DB×114# (9#-18#)	5500r.p.m.	5mm	30.7mm	5-13mm	AUTO	全回转式	41/38kg	586 × 230 × 540
FY8700-5-3D	★	DB×114# (9#-18#)	5500r.p.m.	5mm	30.7mm	5-13mm	AUTO	全回转式	28kg	586 × 230 × 540
FY8700-5-6D1	★	DB×114# (9#-18#)	5500r.p.m.	5mm	30.7mm	5-13mm	AUTO	全回转式	28kg	586 × 230 × 540



## FY8907-5-6D

电脑厚料平缝机

COMPUTER CONTROLLED LOCKSTITCH  
SEWING MACHINE FOR HEAVY DUTY

剪线结构简单合理，故调整方便

考虑从中厚料到厚料范围的缝制而设计出来的传动结构使  
缝制效果更完美

全回转2倍大旋梭

强有力的倒缝继电器使倒缝时亦能保持针脚的美观性

Simple & easily adjustable thread trimming mechanism.

Driving mechanism designed not only for medium thick material but for  
heavy material which guarantees powerful sewing and perfect seaming.  
With large hook.

The powerful reverse feeding relay ensure the elegant stitich when  
backward sewing.



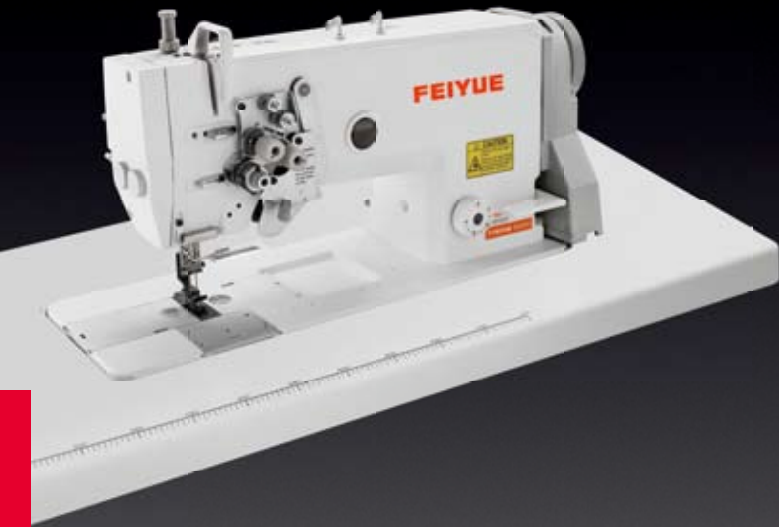
稳定的旋转型切线

旋转型切线装置能适应各种类型的缝料及缝线  
保证稳定可靠地完成切线

*The stable rotary-type thread trimmer performs  
stable thread trimming regardless of  
materials or threads.*



FEIYUE YAMATA



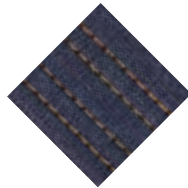
## FY84/875(大旋梭)

高速双针分离针杆平缝机系列  
HIGH-SPEED DOUBLE-NEEDLE LOCKSTITCH  
SEWING MACHINES WITH SEPARATE  
NEEDLE BAR SERIES  
( WITH BIG HOOK )



## FY84-1-5D FY875-1-5D

自动高速双针分离针杆平缝机系列  
AUTOMATIC HIGH-SPEED  
DOUBLE-NEEDLE LOCKSTITCH  
SEWING MACHINES WITH SEPARATE  
NEEDLE BAR SERIES

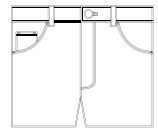
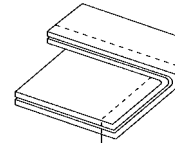
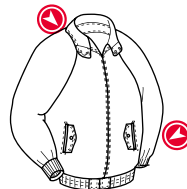


机针送布，缝纫不会有偏差和缩小  
With needle feeding there will not be warp or shrink when sewing

只需要推一下操作手柄，就可以停止左针或右针，  
有必要时，可以作单针机使用

机针送布，缝纫不会有偏差和缩小

Only by pushing operation handle, it could stop left or right needle; If  
necessary, it could be used as a single-needle sewing machine.  
With needle feeding, there will not be warp or shrink when sewing.



### 机器信息附表 Information List

	Ⓜ	Ⓜ	止	↓	⊙	↘	⚖	⊠
FY84-3L	★	★	5mm	DP×5 11-16 #	3000r.p.m.	7-13mm	55/48kg	675 × 310 × 660
FY84-5M	★	★	5mm	DP×5 11-16 #	3000r.p.m.	7-13mm	55/48kg	675 × 310 × 660
FY84-7H	★	★	5mm	DP×5 14-22 #	3000r.p.m.	7-13mm	55/48kg	675 × 310 × 660
FY84-1-5DH	★	★	7mm	DP×5 14-22 #	3000r.p.m.	10mm	55/48kg	675 × 310 × 660



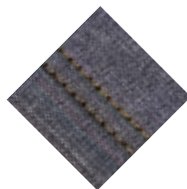
## FY82/872(大旋梭)

高速双针平缝机系列

HIGH-SPEED  
DOUBLE-NEEDLE LOCKSTITCH  
SEWING MACHINES SERIES  
( WITH SMALL HOOK )

适用于中厚料、厚料的双针锁式线迹缝纫作业  
采用大旋梭，减少换底线次数，大大提高生产效率  
具有调节过线松紧装置，操作更加简便  
机针送布

Suitable for thick and medium-thick materials with two parallel rows of lockstitches.  
Adjust by using big hook, production efficient has been enhanced.  
Thread tension adjustment device  
Needle feeding



## FY82-1-5D FY872-1-5D

自动高速双针平缝机系列

AUTO HIGH-SPEED  
DOUBLE-NEEDLE LOCKSTITCH  
SEWING MACHINES SERIES

厚薄料均可使用，应用范围广泛  
针插进布后稳定地送布，缝纫不会有偏差和缩小  
采用循环供油方式，使缝纫噪音降低，进一步提高缝纫性能

With wide application suitable for light weight and heavy weight material.  
Stable cloth feeding after needle insert into cloth, sewing will not warp  
The recycling oil supply system has decreased noise and improved sewing quality

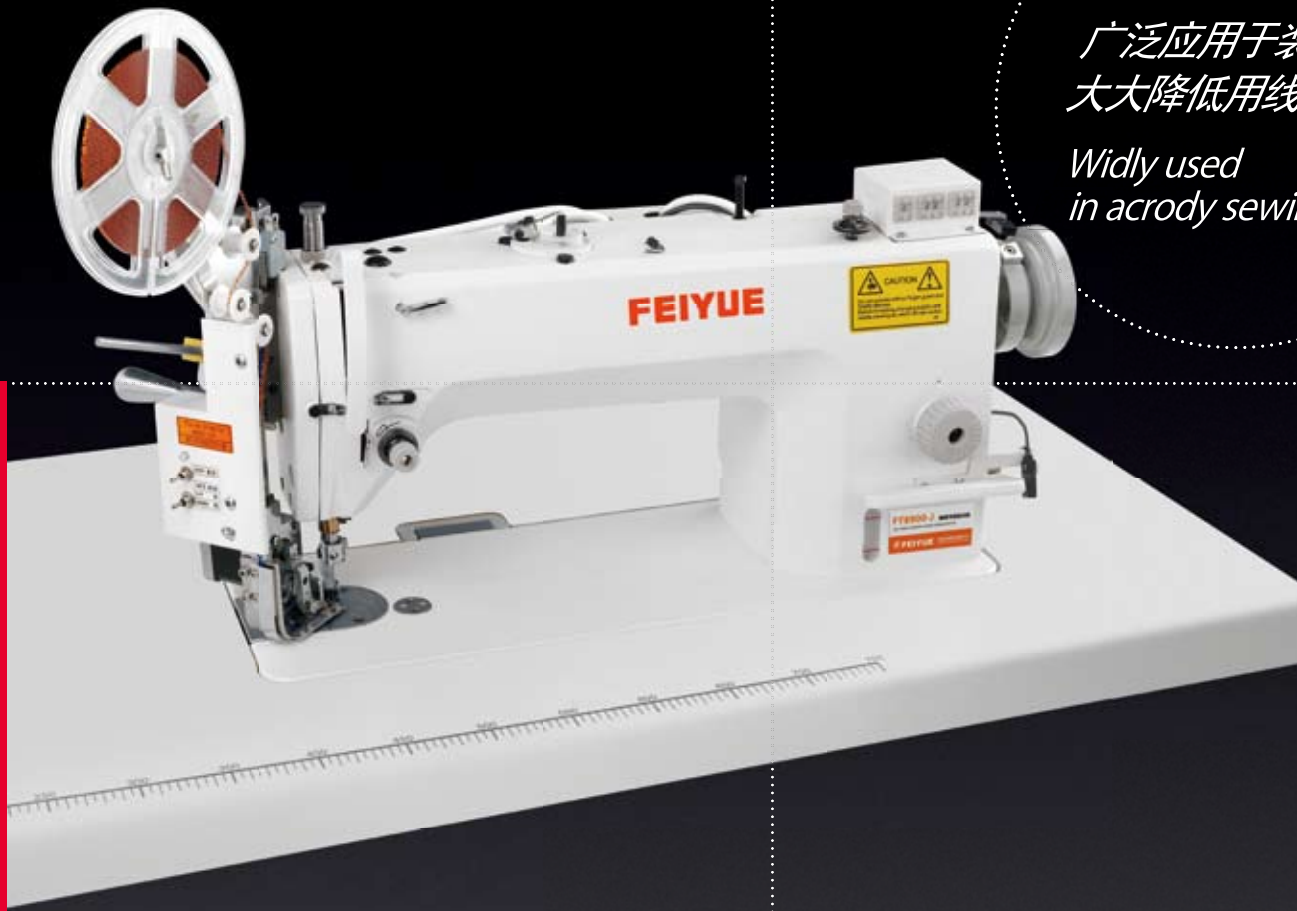
### 机器信息附表 Information List

	M	H	L	±	!	○	∞	⚖	⊠
FY82-3L	★	★		4mm	DP×5 11-16 #	4000r.p.m	7-13mm	48/43kg	675 × 310 × 660
FY82-5M	★	★		4mm	DP×5 11-16 #	4000r.p.m	7-13mm	48/43kg	675 × 310 × 660
FY82-2H	★	★		4mm	DP×5 11-16 #	4000r.p.m	7-13mm	48/43kg	675 × 310 × 660
FY82-1-5D	★	★	★	4mm	DP×5 9 #	3500r.p.m	13mm	48/43kg	675 × 310 × 660





FEIYUE YAMATA



广泛应用于装饰缝!  
大大降低用线成本!

Widly used  
in acrody sewing.

## FY8900-J

高速平缝金片机

HIGH SPEED LOCKSTITCH SEQUIN  
SEWING MACHINE

自由选择亮片花型,最多可以选择99x99种送片方式,  
操作者可以任意缝制各种亮片花型  
特殊设计的亮片压脚保证机器缝片平稳

Programmable sequin feeding type, maximum available for  
99x99types. Knee lift presser foot to free the sewer's hand to guide  
the fabric..

Special designed presser foot for stable sequin embroidery.

配合各种平缝机,使平缝机具备亮片功能

高速独立亮片平缝装置,最高工作速度可达90-900  
针/分钟

可以刺绣3毫米、5毫米任意形状的亮片,不需要更换  
任何零件

Various lockstitch sewing machines equipped with sequin device  
can perform sequin embroidery.

High speed sequin device for sewing machine with a maximum  
90-900 stitches per minute.

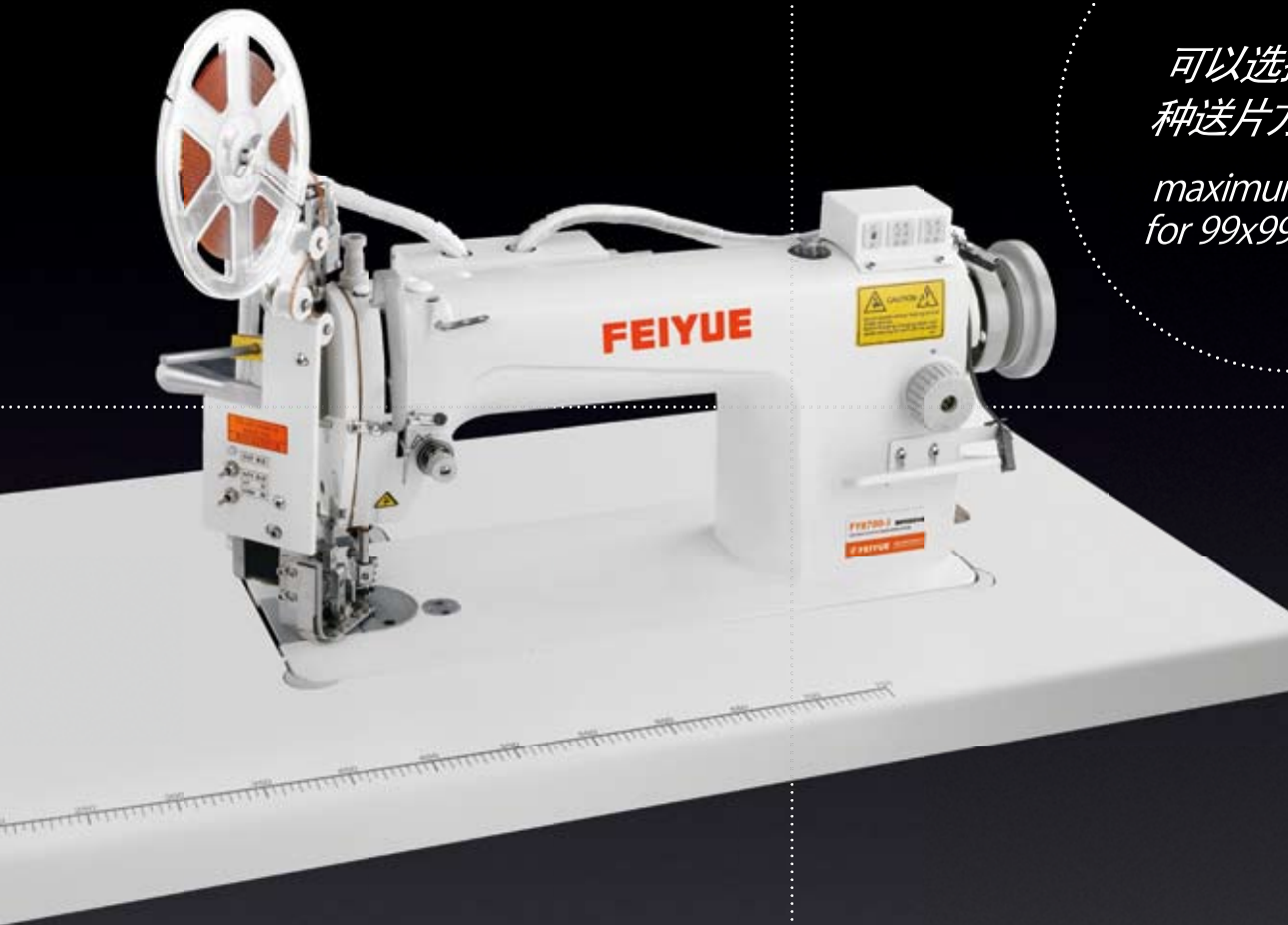
Sequin size available for 3mm,5mm at any shape.

可以两个尺寸高位锁定亮片装置,保证平绣正常使用  
手轮装置升降,操作方便

Sequin device holding bar makes easy sewing work after locking  
device at 2 heights.

Wheel lifter mechanism for keeping the sequin device on upper  
position





可以选择99x99  
种送片方式

maximum available  
for 99x99types

## FY8700-J

高速平缝金片机

HIGH SPEED LOCKSTITCH SEQUIN  
SEWING MACHINE

自由选择亮片花型，最多可以选择99x99种送片方式，  
操作者可以任意缝制各种亮片花型  
特殊设计的亮片压脚保证机器缝片平稳

Programmable sequin feeding type, maximum available for  
99x99types. Knee lift presser foot to free the sewer's hand to  
guide the fabric.

Special designed presser foot for stable sequin embroidery.

配合各种平缝机，使平缝机具备亮片功能

高速独立亮片缝装置，最高工作速度可达5000针/分钟  
可以刺绣3毫米、5毫米的任意形状的亮片，不需要更换  
任何零件

Various lockstitch sewing machines equipped with sequin device  
can perform sequin embroidery.

High speed sequin device for sewing machine with a maximum  
5000 stitches per minute.

Sequin size available for 3mm,5mm at any shape.

可以两个尺寸高位锁定亮片装置，保证平绣正常使用  
手轮装置升降，操作方便

Sequin device holding bar makes easy sewing work after locking  
device at 2 heights.

Wheel lifter mechanism for keeping the sequin device on upper  
position



FEIYUE YAMATA



## FY9101-J

微油高速平缝金片机

TINY-OIL HIGH-SPEED LOCKSTITCH SEQUIN SEWING MACHINE

自由选择亮片花型，最多可以选择99x99种送片方式，操作者可以任意缝制各种亮片花型  
特殊设计的亮片压脚保证机器缝片平稳  
手轮装置升降，操作方便

Programmable sequin feeding type, maximum available for 99x99types. Knee lift presser foot to free the sewer's hand to guide the fabric..

Special designed presser foot for stable sequin embroidery.

Wheel lifter mechanism for keeping the sequin device on upper position.



## FY9101-J-6D

配合各种平缝机，使平缝机具备亮片功能

高速独立亮片平缝装置，最高工作速度可达60-900针/分钟

可以刺绣3毫米、5毫米任意形状的亮片，不需要更换任何零件

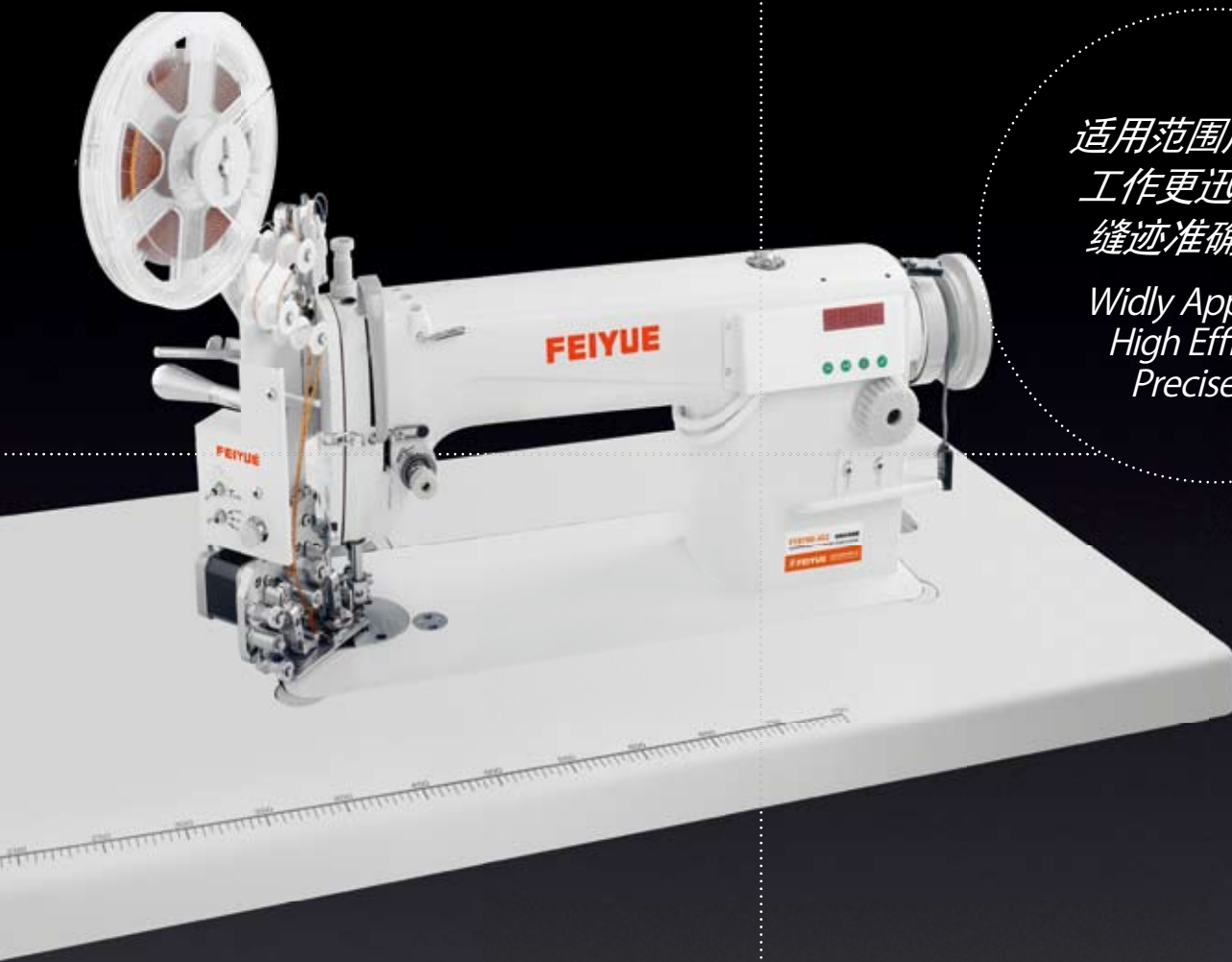
可以两个尺寸高位锁定亮片装置，保证平绣正常使用

Various lockstitch sewing machines equipped with sequin device can perform sequin embroidery.

High speed sequin device for sewing machine with a maximum 90-900 stitches per minute.

Sequin size available for 3mm,5mm at any shape.

Sequin device holding bar makes easy sewing work after locking device at 2 heights.



适用范围广!  
工作更迅速!  
缝迹准确无痕迹!

*Widly Applied  
High Efficiency  
Precise Stitch*

## FY8700-JG2

双金片平缝机



广泛应用于装饰缝!  
大大降低用线成本!

*Widly used  
in acrody sewing.*

双金片独立亮片装置最高工作速度900转/分钟  
双金片输出可任意搭配亮片,缝制出各种多姿精美图案  
双金片输出,每个金片输出可最多选择99X99种送片方式  
可制绣3毫米/5毫米/7毫米任意形状的亮片

The maximum speed of double sequin device is 900 r.p.m.  
The device would suitable for any kinds of sequin to sew various elegant patterns.

Double sequins feeding, every sequin could be fed in the way of 99X99 different kinds in max.

It could sewing the sequin of 3mm, 5mm and 7mm in any shape.



FEIYUE YAMATA



## FY5010

珠边机

PINPOINT SADDLE STITCH  
SEWING MACHINES

操作方便,线迹平稳美观、性能更稳定,使用寿命更长  
自动供、回油润滑装置

本机采用机构优化分析,扩大缝料选择范围,  
获得优美的仿手工缝线迹

成本低,生产效率高的仿手缝缝纫机

本机适用于缝制针织、棉、化纤等缝料;可广泛应用于女式  
服装的装饰缝等

It operates easily and the stitches are steady and beautiful.  
Automatic oil supply and retrieving device.

This machine adopts the organization to optimize and analyse, expanding  
choice of sewing materials, to obtain the beautiful imitative craft stitches.

Low cost, high efficiency sewing machine imitate to hand-craft.

It is suitable for sewing knitwear, cotton and chemical fibre materials with  
medium thickness, and can be applied extensively to sewing ornament  
on woman style clothing.



## FY5200

高速带刀平缝机

HIGH-SPEED LOCKSTITCH  
SEWING MACHINES WITH EDGE CUTTER

高速高效、线迹美观,切边平整,使缝纫和修边工序  
一次完成、适用于缝制各种衬衫、西服等,特别是衣  
领、前襟等部位

此机构可同步完成缝制和修边,缝制时通过简单的操  
作即可使切刀脱离或进入工作状态,机器转动时就会  
精巧的修边

High-speed, High efficiency, beautiful stitch nest and even edge-  
cutting, sewing and edge-making can be completed wonderfully.  
Suitable for sewing various shirts, especially for collar, front of  
garment etc.

This device can finish sewing and edge-cutting simultaneously  
and the edge cutter can be engaged or disengaged simply while  
sewing.



灵巧切刀自动修边

The machine is applicable for different materials



# FY8900

微油高速平缝机

TINY-OIL HIGH-SPEED LOCKSTITCH SEWING MACHINES



机器重量比以往平缝机型增加40%，增加机器的稳定性  
同步带传动,简化传动环节,降噪,减震

The weight of machine has been increased for 40%, which improve its stability  
Timing belt and cylinder driving decrease the noise and vibration.

机头下颚高度为70mm,机头周围空间增大,有利于检查  
缝纫区域

机腔宽为300mm,高为140mm,宽大机腔,使缝纫布件  
更容易移动和定位

The neig unclar head become 70mm, which inlayed the space around head and good for the checking of sewing area.  
The cavity machine is 300mm in wide, 140mm in height. The spacious cavity is favorable for moving and orientation of sewing material.

微油润滑,使用密闭式油箱,内循环润滑系统,杜绝机油  
飞溅

机头铰链在针杆后移向右侧 100mm,更有利于缝纫件  
的通过

Ting oil lubrication, sealed oil tank, recycling oil supply, which avoid oil stain.  
The neigh of back of needle bar is moved to right side for 100mm. which male the material to get through easily.

机器信息附表 Information List

	Ⓜ	🧵	🔄	⚙️	💧	📏	🚫
FY5010	★	BECKET1738 90#-30#	2000r.p.m.	3.5-7mm	AUTO lubricated	4-10mm	370W
FY5200	★	DBx19#-14#	4500r.p.m.	0-5mm	AUTO lubricated	4-10mm	370W



FEIYUE YAMATA



## FY3800A/B/C

双针链式缝纫机

HIGH-SPEED DOUBLE-NEEDLE CHAIN STITCH SEWING MACHINES

本机采用连杆式送料机构，针杆挑线，弯针勾线，形成双线链式线迹、线迹牢固且富有弹性，适用于服装内衣，床上用品及薄形布袋和皮革制品的搭接缝、装饰缝，针间距有五种规格可供选择

This machine adopts link-typed feeding mechanism, needle bar thread taking up, and looper thread catching to produce two lines of chainstitches, which are firm and elastic, suitable for lapping seam and decorative seam on garments, underwear, bedding articles and leather goods. There are five different kinds of gauges available for selection.



## FY0058A

双针链式缝纫机

HIGH-SPEED DOUBLE-NEEDLE CHAIN STITCH SEWING MACHINES

对勾线机构进行改进，将原有固定式针防护机构改进为移动式针防护机构，能有效防止勾线运动中的断针，跳针现象，使缝制品线迹更为美观

By changing fixed needle protection mechanism into moveable needle protection mechanism. It can prevent needle breaking and stitch skipping effectively in the motion of the thread hooking, and make stitch more beautiful.

机器信息附表 Information List



FY3800A

FY3800B

FY3800C



2



75-90



5500r.p.m



29/38kg



610×240×570



## FY5550

高速平缝机

HIGH-SPEED LOCKSTITCH  
SEWING MACHINES



立竿见影,真正消除褶皱现象  
减少熨烫,延长衣服使用寿命  
经济实惠,大大降低除皱成本  
操作简单,操作者可随心所欲  
质量改进,大大提高工作效率

Efficient effect, to eliminate pucker thoroughly  
Decrease ironing, to prolong the life of the cloth.  
Economical cost, to reduce the cost on pucker erasing.  
Easy operation, to diminish the difficulty for the new operator.  
Improved quality, to advance the efficiency enormous.



## FY8600

高速平缝机系列

HIGH-SPEED LOCKSTITCH  
SEWING MACHINES SERIES

本机适用于缝制针织、棉、化纤等缝料  
操作方便,线迹平稳美观  
倒顺送料、自动供、回油润滑装置

It is suitable for sewing knitwear, cotton and chemical fibre materials  
with medium thickness.  
It operates easily and the stitches are steady and beautiful.  
It has two-way feeding, automatic oil supply and retrieving device.

机器信息附表 Information List

	(M)	(L)	(H)	!	☺	⊥	↺	⚖	⊠
FY8600	★			DB×114#	5500r.p.m.	5mm	5mm-13mm	36/33kg	586×230×540
FY5550	★			DB×114# (9#-18#)	5500r.p.m.	5mm	5.5mm-13mm	33/28kg	586×230×540
FY5550L		★		DB×119# (9#-11#)	4000r.p.m.	4mm	4mm-9mm	36/33kg	586×230×540
FY5550H			★	DB×121# (19#-23#)	3500r.p.m.	5mm	5.5mm-13mm	36/33kg	586×230×540



## FY8700

高速平缝机  
HIGH-SPEED LOCKSTITCH  
SEWING MACHINES



## FY8500

高速平缝机  
HIGH-SPEED LOCKSTITCH  
SEWING MACHINES



### 机器信息附表 Information List

	Ⓜ	Ⓛ	Ⓜ	!	Ⓢ	Ⓢ	Ⓢ	Ⓢ	Ⓢ	Ⓢ	Ⓢ	Ⓢ
FY8700	★			DB×114# (9#-18#)	5500r.p.m.	5mm	30.7mm	5-13mm	AUTO	全回转式	28kg	586×230×540
FY8500	★			DB×1-14# (9#-18#)	5500r.p.m.	5mm	30.7mm	5.5mm-13mm	AUTO	全回转式	28kg	586×230×540
FY8500L		★		DB×1-19# (9#-11#)	4000r.p.m.	4mm	30.7mm	4mm-9mm	AUTO	全回转式	28kg	586×230×540
FY8500H			★	DB×1-21# (19#-23#)	4000r.p.m.	5mm	35mm	5.5mm-13mm	AUTO	全回转式	28kg	586×230×540

经销商/Agent



ONE FAMILY  
WORLDWIDE

四海一家 中國飛躍

中国飞跃集团  
CHINA FEIYUE GROUP

地址：中国浙江省台州市椒江机场中路109号  
Add: NO.109 Middle Airport Rd. taizhou City. Zhejiang Province. P.R.China  
电话 Tel: 0576-88155811/88176395  
传真 Fax: 0576-88155800/88155809 电子邮箱 Email:sales@mail.tzptt.zj.cn  
网址 http://www.feiyuegroup.com 邮政编码 Post Code: 318010

- 本手册所列之产品可能会因改良而有所变动,以随机说明书为准,恕不另行通知。
- 由于印刷原因,产品实际颜色可能稍有差异,敬请谅解。
- 中国飞跃集团公司保留对此资料的解释权。